



April 11, 2025

CITY OF KENORA

**TENDER #411-431-001-25A
2025 City of Kenora Sewer and Water Reconstruction**

ADDENDUM No. 1

This Addendum is issued to clarify the tender documents prior to tender closing, for the above captioned tender call.

The following modifications are hereby made a part of the Tender document and all of their effect is to be included in the tender prices.

Revisions to Tender Documents:

Referring to ARTICLE 2.0 SUBMISSION OF TENDERS of the Instructions to Tenderers:

Revise from:

...“2.1 The CITY will receive sealed tenders until: 11:00:00 a.m. CST Thursday, April 17, 2025(“Tender Closing”).”...

and replace with:

...“2.1 The CITY will receive sealed tenders until: 11:00:00 a.m. CST Thursday, April 24, 2025(“Tender Closing”).”...

Referring to ARTICLE 2.0 SUBMISSION OF TENDERS of the Instructions to Tenderers:

Revise from:

...“ 2.3 Inquiries are permitted until April 14nd at 4:00pm CST and are to be directed to the below City Contact via email.”...

and replace with:

...“2.3 Inquiries are permitted until April 17th at 4:00pm CST and are to be directed to the below City Contact via email.”...



Referring to the Invitation to Tender form:

Revise the INVITATION TO TENDER/ADVERTISEMENT from:

“ Time and date for Tender Closing is:

11:00:00 a.m. CST/CDT on April 17, 2025
(the “Tender Closing”)

and replace with:

“ Time and date for Tender Closing is:

11:00:00 a.m. CST/CDT on April 24, 2025
(the “Tender Closing”)

Responses to Questions Received Regarding Tender:

Q: Drawings and Unit Price Sheets show both DR25 and DR35 pipe for the storm sewer. Supplemental Specifications state that all storm pipes are to be DR25. Please clarify.

A: DR25 pipe is to be used where 2.5m horizontal or 0.5m vertical separation with the water main cannot be achieved. DR35 is to be used everywhere else. Drawings and Unit Price sheets are correct. To summarize:

- DR35 for the storm main along 9th St
 - DR25 for the storm crossings on 9th St
 - DR25 for the storm main and crossings on Mellick Ave
-

Q: Please confirm the number of new lights & arms along 9th Street North?

A: 3 new arms, 3 new luminaires to be installed on existing wood poles. 4 existing arms and luminaires to remain.

Q: On Drawing E1: Is new OH wire required along 9th Street North. Existing lights work on existing lighting circuit. Per Drawing E1 Sheet Notes.

A: New OH wire is not required for lights on 9th St North. Use existing OH wire.

Q: Please Confirm the number of new steel poles, number of new lights and number of new arms along Mellick Avenue.

A: 5 new poles, 2 new arms, 2 new luminaires. 3 existing arms and luminaires to be salvaged and reused.



Q: Is the transition of the OH to UG power for streetlights on Mellick Avenue to be done from a new steel pole?

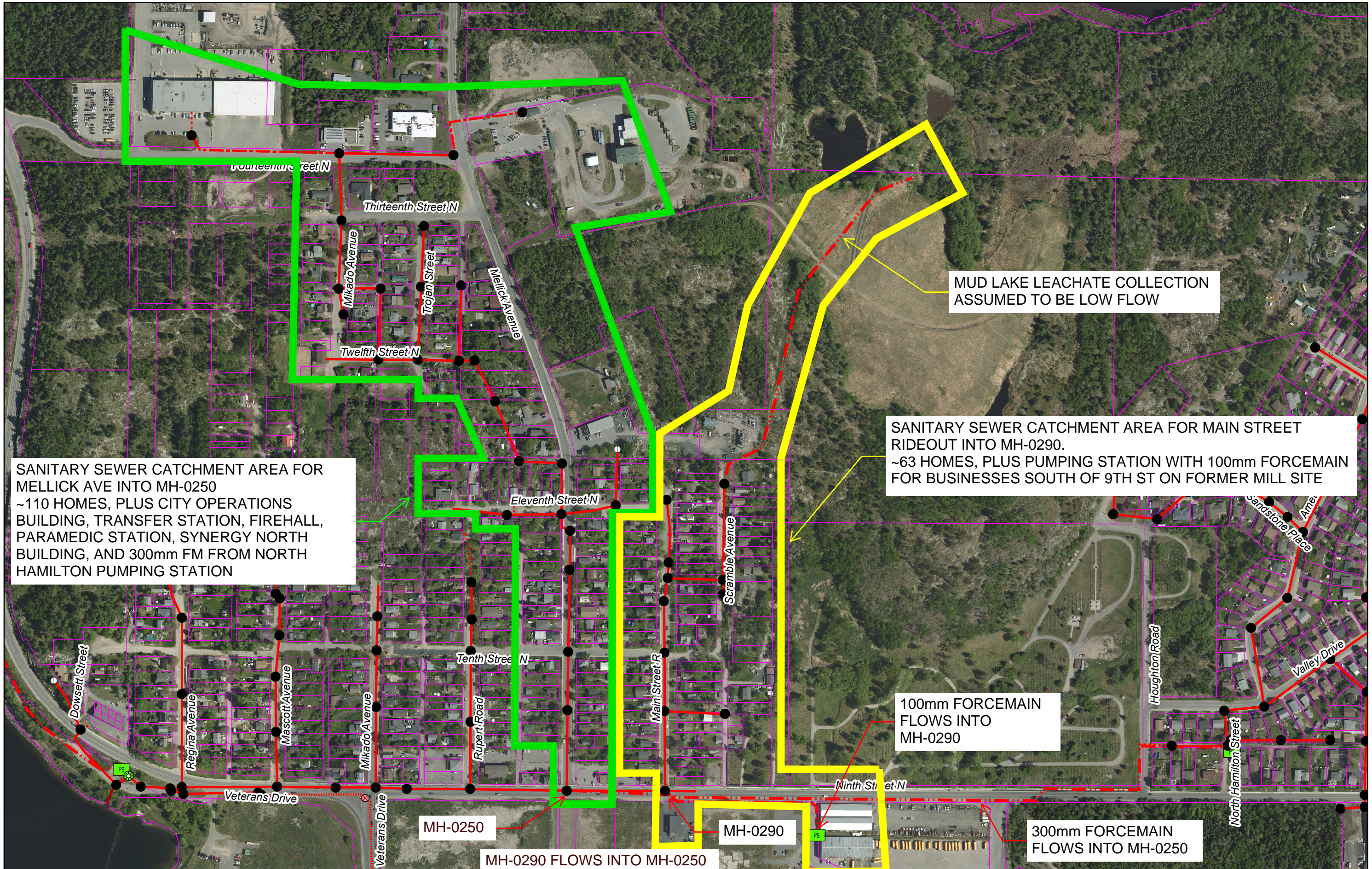
A: Yes. Lump sum bid price for B.2 Item 64 to include all items, work, and costs required to achieve proper bonding for new metal poles and to meet all required codes, including but not limited to: service-rated weatherproof enclosures, ground wire, grounding electrodes, and the replacement of biphase overhead conductor with triplex overhead conductor to the nearest wood pole, as required.

Q: Please provide more information for the crossing conduits at the intersection of 9th St N and Mellick Ave.

A: Intersection conduit to be Rigid Polyvinyl Chloride (RPVC) material. Bury depth to be a minimum of 1.0m, direct bury with compacted backfill up to bottom of subbase level. Concrete encasement is not required. Use Unit Price Sheet B.1 Item 89 for all costs associated with this work.

Q: Does the City have flow rates for the sanitary line that is to be by-passed for this project?

A: The City does not have flow rates available. See map on next page showing approximate catchment areas for the sanitary sewer in the project area. Please note that the map is for informational purposes only and no guarantee is given as to the accuracy, completeness or reliability of the information shown. This map should not be relied upon for design and construction purposes, Tenderers are responsible for verifying the information shown.



SANITARY SEWER CATCHMENT AREA FOR MELLICK AVE INTO MH-0250
~110 HOMES, PLUS CITY OPERATIONS BUILDING, TRANSFER STATION, FIREHALL, PARAMEDIC STATION, SYNERGY NORTH BUILDING, AND 300mm FM FROM NORTH HAMILTON PUMPING STATION

SANITARY SEWER CATCHMENT AREA FOR MAIN STREET RIDEOUT INTO MH-0290.
~63 HOMES, PLUS PUMPING STATION WITH 100mm FORCEMAIN FOR BUSINESSES SOUTH OF 9TH ST ON FORMER MILL SITE

MUD LAKE LEACHATE COLLECTION ASSUMED TO BE LOW FLOW

100mm FORCEMAIN FLOWS INTO MH-0290

300mm FORCEMAIN FLOWS INTO MH-0250

MH-0250

MH-0290

MH-0290 FLOWS INTO MH-0250