



# Invitation to Tender

CITY OF KENORA

## **INVITATION TO TENDER / ADVERTISEMENT**

Sealed Tenders for:

Moncrief Construction Sports Centre Walkway Bridge Fabrication & Installation in Kenora

Tender Number: 732-001-23B

Will be received

by:

**City of Kenora**

(the "City")

at:

**1 Main Street South**

**Kenora, ON P9N 3X2**

**Attention: Kelly Galbraith, Deputy City Clerk**

Time and date for Tender Closing is:

11:00:00 a.m. CST/CDT on July 16, 2026 (the "Tender Closing")

1. The work to be undertaken generally involves, but is not necessarily limited to demolition of existing walkway bridge, fabrication and installation of new bridge, with attached to these Instructions to Tenders.
2. The CITY's consultant for the Project is Stantec.
3. The Successful Bidder shall achieve substantial performance of the Work for the Project by November 23<sup>rd</sup>, 2026.
4. The drawings and specifications for the Project can be obtained from Tino Mpofu, City of Kenora Project Manager, at [tmpofu@kenora.ca](mailto:tmpofu@kenora.ca).
5. All written inquiries regarding the technical aspects of the drawings and specifications for the Work shall be emailed to Tino Mpofu, City of Kenora Project Manager, at [tmpofu@kenora.ca](mailto:tmpofu@kenora.ca), however the bidder(s) acknowledge and agree that the CITY does not have an obligation to provide a response to any written inquiry and that it is in the sole and unfettered discretion of the CITY to provide any written response to a written inquiry. Telephone inquiries and email inquiries will not be replied to.
6. Submission of a tender by a Bidder gives the CITY the right to require the Bidder to execute the contract to perform the Work as set out within the tender documents. Tenders may not be withdrawn after the Tender Closing and will be irrevocable and open for acceptance by the CITY for a period of sixty (60) days following the end of the day of the Tender Closing. The Successful Bidder will be notified in writing of the award of the Tender when the CITY delivers a letter of intent to the Successful Bidder.



# **INSTRUCTIONS TO TENDERERS**

**CITY OF KENORA**

---

# INSTRUCTIONS TO TENDERERS

## 1 BACKGROUND

- 1.1 The City of Kenora (the "CITY") is seeking tenders for a walkway bridge fabrication and installation (the "Work") as more particularly set out in the attached appendices to these Instructions to Tenderers.
- 1.2 The CITY will receive sealed tenders until 11:00:00 a.m. CST/CDT on July 16, 2026 ("Tender Closing"). Faxed tenders will not be accepted and will be returned to the Tenderer.

## 2 SUBMISSION OF TENDERS

- 2.1 Each Tender shall be addressed to the CITY in a sealed envelope clearly marked with the Tenderer's name, address and tender number. The sealed envelope containing the Tender shall be delivered before the Tender Closing to the CITY in accordance with the Invitation to Tender and the Instructions to Tenderers at:

**City of Kenora  
1 Main Street South  
Kenora, ON P9N 3X2  
Attention: Heather Pihulak, City Clerk**

- 2.2 In the event of a dispute or issue about whether or not a tender complies with the Instructions to Tenderers, the CITY reserves the right to retain and open a copy of the tender in question in order to seek and obtain a legal opinion in relation thereto. The opening of a tender does not in any way constitute an admission by the CITY as to the compliance, or not, of the subject tender.

## 3 TENDER FORM

- 3.1 Each Tenderer shall submit a complete tender on the Tender Form which forms part of the Tender Documents with the blank spaces filled in. The tender sum must be written in words as well as figures, and must be for a sum in Canadian Dollars including all tariffs, freight, duties and taxes other than the Goods and Services Tax which must be shown as a separate amount unless otherwise specifically stipulated (hereinafter referred to as the "Tender Sum"). In the event of a discrepancy between an amount written in words and an amount written in figures, the amount written in words shall be deemed the intended amount. Tenders shall be written in English.
- 3.2 Notwithstanding the foregoing, the CITY shall be entitled to accept a Tender in such form as the CITY in its sole and unfettered discretion deems acceptable irrespective of irregularities whether of a trivial or substantial nature, or whether the Tender is noncompliant in a trivial or substantial manner.
- 3.3 The CITY shall not be obligated to accept Tenders that are unsigned, incomplete, conditional, illegible, unbalanced, obscure, contain irregularities of any kind, or contain mathematical or calculation errors of any kind. On Unit Price Tenders, if there is a discrepancy found between the unit price and the extended amount, the

unit price shall be deemed to represent the intention of the Tenderer. Discrepancies between words and figures will be resolved in favour of the words. Discrepancies between the indicated sum of any figures and the correct sum thereof will be resolved in favour of the correct sum. Any discrepancies between the Tender Form and a post Tender Closing submission required by the Tender Documents will be resolved in favour of the post Tender Closing submission.

- 3.4 Tenders shall not be withdrawn, modified or clarified after being delivered in accordance with the Tender Documents unless such withdrawal, modification or clarification is made in writing and actually received by Heather Pihulak of the CITY prior to the Tender Closing. Any withdrawal, modification or clarification of the Tender must be followed by a letter of confirmation signed and sealed in the same manner as the Tender and delivered to the address for the CITY in the Invitation to Tender within 48 hours of the Notice of the Withdrawal, Modification or Clarification.

#### **4 THE FREEDOM OF INFORMATION AND PROTECTION OF PRIVACY ACT**

- 4.1 All documents submitted to the CITY will be subject to the protection and disclosure provisions of Ontario's *Freedom of Information and Protection of Privacy Act* ("FOIP"). FOIP allows persons a right of access to records in the CITY's custody or control. It also prohibits the CITY from disclosing the Tenderer's personal or business information where disclosure would be harmful to the Tenderer's business interests or would be an unreasonable invasion of personal privacy as defined in sections 17 and 21 of FOIP. Tenderers are encouraged to identify what portions of their submissions are confidential and what harm could reasonably be expected from its disclosure. However, the CITY cannot assure Tenderers that any portion of the Tenderer's documents can be kept confidential under FOIP.

#### **5 TENDER DOCUMENTS**

- 5.1 The documents for the Tender are:

- Invitation to Tender
- Instructions to Tenderers
- Appendix A Additional Instructions to Tenderers
- Appendix B General Requirements
- Appendix C General Specifications
- Appendix D Design Drawings

(hereinafter collectively referred to as the "Tender Documents")

By submitting its Tender, the Tenderer acknowledges and agrees that it has received and reviewed the Tender Documents.

#### **6 VARIATION IN TENDER DOCUMENTS AND NO IMPLIED OBLIGATIONS**

- 6.1 The Tenderer shall carefully examine the Tender Documents. Any errors, omissions, discrepancies or clauses requiring clarification shall be reported in writing to the CITY at least 10 calendar days prior to the Tender Closing. Where necessary the CITY shall respond to reported errors, omissions, discrepancies or clauses requiring clarification by way of Addenda.

- 6.2 Should a Tenderer fail to report any such errors, omissions, discrepancies or clauses requiring clarification at least 10 calendar days prior to the Tender Closing, the CITY shall be the sole judge as to the intent of the Tender Documents.
- 6.3 No implied obligation of any kind by or on behalf of the CITY shall arise from anything in the Tender Documents, and the express covenants and agreements contained in the Tender Documents and made by the CITY, are and shall be the only covenants and agreements that apply.
- 6.4 Without limiting the generality of Article 6.3, the Tender Documents supercede all communications, negotiations, agreements, representations and warranties either written or oral relating to the subject matter of the Tender made prior to the Tender Closing, and no changes shall be made to the Tender Documents except by written Addenda.

## **7 ADDENDA**

- 7.1 Any changes to the Tender shall be in writing in the form of Addenda. Any Addenda issued to the Tender shall form part of the Tender Documents, whether or not the receipt of same has been acknowledged by a Tenderer, and the cost for doing the work therein shall be included in the Tender Sum. Verbal representations shall not be binding on the CITY nor form part of the Tender Documents. Technical inquiries into the meaning or intent of the Tender Documents must be submitted in writing to the person identified in Article 2.1 of the Instructions to Tenderers.

## **8 TENDER**

- 8.1 Tenderers submitting Tenders shall be actively engaged in the line of work required by the Tender Documents and shall be able to refer to work of a similar nature performed by them. They shall be fully conversant with the general technical phraseology in the English language of the lines of work covered by the Tender Documents.
- 8.2 Each Tenderer shall review the Tender Documents provided by the CITY and confirm that it is in possession of a full set of Tender Documents when preparing its Tender.
- 8.3 Tenders shall be properly executed in full compliance with the following requirements:
  - 8.3.1 The signatures of persons executing the Tender must be in their respective handwriting; and
  - 8.3.2 If the Tender is made by a limited company, the full name of the company shall be accurately printed immediately above the signatures of its duly authorized officers and the corporate seal shall be affixed;
  - 8.3.3 If the Tender is made by a partnership, the firm name or business name shall be accurately printed above the signature of the firm and the Tender shall be signed by a partner or partners who have authority to sign for the partnership;

8.3.4 If the Tender is made by an individual carrying on business under the name other than its own, its business name together with its name shall be printed immediately above its signature or

8.3.5 If the Tender is made by a sole proprietor who carries on business in its own name, the proprietor shall print its name immediately below its signature.

8.4 Tenders received from agents representing principals must be accompanied by a Power of Attorney signed by the said principals showing that the agents are duly authorized to sign and submit the Tender and have full power to execute the Contract on behalf of their principals. The execution of the Contract will bind the principals and have the same effect as if it were duly signed by the principals.

## **9 TENDER DEPOSIT**

9.1 The Tenderer is required to submit with its Tender, a Consent of Surety and a Bid Bond in a form acceptable to the CITY, or in lieu of a Bid Bond, a Tenderer may submit, along with a Consent of Surety, a certified cheque or an irrevocable letter of credit in favour of the CITY equal to 10% of the Tender Sum as a guarantee that, if awarded the contract for the Work, the Tenderer will execute a contract.

9.2 The Bid Bonds, certified cheques or irrevocable letters of credit of the unsuccessful Tenderers shall be returned as soon as possible after the Contract has been duly executed by the Successful Tenderer.

9.3 The CITY will not pay any interest on money furnished as security.

9.4 The Bid Bond and Consent of Surety shall be issued by a Surety Company licensed in the Province of Ontario and satisfactory to the CITY.

## **10 PERFORMANCE AND LABOUR AND MATERIAL PAYMENT BONDS**

10.1 The Successful Tenderer shall be required to furnish at its own expense a Performance Bond and Labour and Materials Payment Bond. For the purposes of this Article, both of these bonds shall be referred to as the "Bonds".

10.2 The Performance Bond shall guarantee the faithful performance of the Contract, and in default thereof, shall protect the CITY against any losses or damage arising by reason of failure of the Successful Tenderer to faithfully perform the Contract.

10.3 The Bonds are to be issued by a Surety Company licensed in the Province of Ontario and satisfactory to the CITY in the amount of 50% of the Contract Price and 50% of the contract price for the Labour and Materials Payment Bond.

10.4 The Performance Bond shall remain in force as a Maintenance Bond for the Warranty Period as defined in the Contract.

10.5 The Bonds shall be in the form set out in the Tender Documents or in such other form as may be acceptable to the CITY.

- 10.6 The CITY may consider alternate forms of security in lieu of the Bonds. The Tenderer shall make known any alternative form of security it wishes the CITY to consider and obtain the CITY's approval prior to submitting a Tender.
- 10.7 The Successful Tenderer shall provide all required Bonds to the CITY no later than 10 working days after receipt of the Letter of Intent from the CITY provided in accordance with Article 16.
- 10.8 The Successful Tenderer shall supply all required Bonds before any Work is undertaken by the Successful Tenderer.
- 10.9 No payment shall be made by the CITY to the Successful Tenderer for any of the Work performed by the Successful Tenderer until the required Bonds have been provided.

## **11 INSURANCE**

- 11.1 The Tender shall be accompanied by a Certificate of Insurance, certifying that the insurance as required by the Contract, is in place or, if the required insurance is not in place, by a Letter of Insurability or Undertaking of Insurance in standard form from the Tenderer's Insurance Broker certifying that the required insurance will be issued to the Tenderer if the Tenderer is the Successful Tenderer.
- 11.2 The Successful Tenderer shall be required to secure and maintain at its own expense the insurance provided for in the Contract.
- 11.3 The Successful Tenderer shall provide all required insurance to the CITY no later than 10 working days after receipt of a Letter of Intent from the CITY provided in accordance with Article 16.

## **12 COMMENCEMENT AND COMPLETION OF WORK**

- 12.1 The Successful Tenderer shall commence the Work within 10 working days after receipt of the executed contract from the CITY and shall complete the Work by the dates specified in the Contract.

## **13 SITE CONDITIONS**

- 13.1 The Tenderer is responsible for inspecting the site(s) of the Work and for making whatever inquiries or arrangements necessary for it to become fully informed of the nature of the site(s) of the Work, including the soil structure and topography of the site(s), and of the Work to be performed and all matters which may in any way affect the Work. Without limiting the foregoing, by the submission of its Tender, the Tenderer acknowledges that it has investigated and satisfied itself as to:
  - a) the nature of the Work;
  - b) the location and all conditions relating to the location of the Work including, but not limited to, accessibility, general character, surface and sub-surface conditions, soil structure, utilities, road, uncertainties of seasonal weather and all other physical, topographical, geological and geographic conditions;

- c) the general character, conditions, laws and restrictions applicable to the Work that might affect the performance of the Work;
  - d) all environmental risks, conditions, laws and restrictions applicable to the Work that might affect the Work; and
  - e) the magnitude of the work required to execute and complete the Work.
- 13.2 The Tenderer is fully responsible for obtaining all information required for the preparation of its Tender and for the execution of the Work. The CITY is not responsible for undertaking any investigations to assist the Tenderer. Any information, plans, drawings, shop drawings or existing equipment or facilities, photos of the original construction, reports or other documents which are not included or referred to in the Tender Documents (the "Non-Tender Information"), form no part of this Tender. The CITY and the CITY's Consultants assume no responsibility of any kind whatsoever arising from or relating to its failure to include or refer to such Non-Tender Information. Tenderers who obtain or rely upon such Non-Tender Information or other documents, do so entirely at their own risk.
- 13.3 The Tenderer's obligation to become familiar with the information described in Article 13.1 is not lessened or discharged by reason of any technical reports, including soils reports or data, test hole drilling reports or other soils information, made available or supplied in conjunction with the tendering process. Any technical reports so provided are for information only and neither the CITY nor the CITY's Consultants accept or assume any responsibility for the contents or accuracy of such technical reports and the Tenderer agrees that the CITY, the CITY's Consultants and their representatives shall not be liable in any way to the Tenderer in respect of such technical reports. The Tenderer further agrees that it shall not rely upon any oral information provided to it by the CITY, the CITY's Consultants or their representatives.

#### **14 PRIME COST AND CONTINGENCY SUMS**

- 14.1 The Tenderer shall include in its Tender Sum any prime cost sums or contingency sums. The Harmonized Sales Tax shall be shown as a separate amount.

#### **15 PERMITS AND INSPECTIONS**

- 15.1 The Tenderer shall include in its Tender Sum the cost of permits and inspections required by any governmental or other authority having jurisdiction or as required to fully perform the Work in accordance with the Contract.

#### **16 SUCCESSFUL TENDERER**

- 16.1 Award of Contract by the CITY occurs once the Tenderer receives an executed contract.
- 16.2 Following the receipt of the executed contract, the Successful Tenderer shall provide the Performance Bond and Labour and Material Payment Bond within the time required in Article 10.7. The Successful Tenderer shall also provide a Certificate of Insurance unless previously provided.

16.2.1 Upon the Successful Tenderer complying with the requirements of both Articles 16.2 and 16.4, the certified cheque or Bid Bond or irrevocable letter of credit, as the case may be, shall be returned to the Successful Tenderer.

16.2.2 If the Successful Tenderer fails to comply with either or both of the requirements of Articles 16.2 and 16.4, the certified cheque or Bid Bond or irrevocable letter of credit, as the case may be, shall be forfeited to the CITY as compensation for damages the CITY may suffer.

16.3 The forfeiture of a Successful Tenderer's certified cheque or Bid Bond or irrevocable letter of credit shall not be construed as a waiver of any rights or remedies which the CITY may have against such Tenderer for loss or damages incurred or suffered in excess of the amount of such certified cheque or Bid Bond or irrevocable letter of credit.

16.4 Within 10 working days of receipt of the Contract from the CITY, the Successful Tenderer shall duly execute the Contract and return the Contract to the CITY.

16.5 Within 10 working days of receipt of the executed contract in accordance with Article 16.1, the Successful Tenderer shall submit a proposed Construction Schedule showing the anticipated time of commencement and completion of each of the various operations to be performed under the Contract.

## **17. TENDER EVALUATION CRITERIA**

17.1 Each Tender will be evaluated on the basis of the criteria listed below and the CITY will have the sole and unfettered discretion to award up to the maximum number of points for each criteria as listed below. By submitting a Tender, the Tenderer acknowledges and agrees that the CITY has, and it is hereby entitled to exercise, the sole and unfettered discretion to award the points for the evaluation of the noted criteria.

17.2 By submitting its Tender, each Tenderer acknowledges and agrees that it waives any right to contest in any legal proceedings, the decision of the CITY to award points in respect of the criteria noted below. The criteria and the maximum number of points for each criteria are as follows:

Price	100
Total Points	100

## **18 WORKERS' COMPENSATION**

18.1 Each Tenderer is to submit with its Tender, a letter of account from the Workers' Compensation Board – Ontario. This letter is to be current and not dated 14 calendar days prior to the Tender Closing.

- 18.2 The Tenderers who do not have an account with the Workers' Compensation Board- Ontario shall provide with their Tender evidence of a subcontractor or other company that will carry such coverage on their behalf.
- 18.3 If the Tenderer is performing work in any exempt industry within the meaning of the Workers Compensation Board Act (the "WCB Act") and does not carry coverage, the Tenderer acknowledges that
- 18.3.1 the CITY is subject to a deeming order under s. 14(2) of the WCB Act (the "Deeming Order"); and
  - 18.3.2 the Deeming Order states that all of the Tenderer's employees, directors, proprietors, partners or employees are deemed to be CITY employees for the purposes of the WCB Act while performing work for the CITY; and
  - 18.3.3 the effect of the Deeming Order is that the Tenderer's employees, directors, proprietors and partners who are injured while performing work for the CITY under the Contract, have no right to sue anyone and are limited to a claim under the WCB Act.
- 18.4 The Tenderer shall communicate the existence and effect of the Deeming Order to all of its employees, directors, proprietors, partners or employees.
- 18.5 The CITY may reject any Tender which fails to comply with the provisions set out in Article 18.

## **19 REGISTRATION**

- 19.1 Prior to commencing the Work, the Successful Tenderer shall obtain all authorizations required by the laws of the Province of Ontario and of the Country of Canada enabling it to carry on business to complete the Work required under the Contract. Failure to be properly authorized shall entitle the CITY to forthwith terminate the Contract without compensation.

## **20 TENDERS EXCEEDING BUDGET**

- 20.1 In addition to the rights contained within Article 20 herein, if the Tender Sum of every Tenderer exceeds the amount the CITY has budgeted for the Work, the CITY may reject all Tenders or attempt to negotiate a lower price with the Tenderer who, in the sole and unfettered discretion of the CITY, has submitted the most advantageous Tender.
- 20.2 Each Tenderer acknowledges and agrees that the CITY has the sole and unfettered discretion to employ any criteria in order to determine the Tender most advantageous to the CITY, that the CITY has no obligation to neither disclose such criteria nor employ the criteria listed outlined in Article 17 Tender Evaluation Criteria.
- 20.3 By submitting its Tender, each Tenderer waives its right to contest in any action, application, case or legal proceeding in any court, the decision which the CITY may pursue under Article 20.1 and 20.2 herein.

20.4 If the Tender Sum of every Tenderer exceeds the amount budgeted for the Work and the CITY negotiates with the Tenderer who has submitted the Tender considered most advantageous to the CITY:

20.4.1 All statements made by either side in the course of negotiation are without prejudice and confidential;

20.4.2 In particular, the CITY's attempt to negotiate with such Tenderer does not constitute a rejection of its Tender; and

20.4.3 The CITY will not attempt to obtain a lower price for the same work that the Tenderer originally bid on, but may attempt to obtain a lower price for an altered scope of work. In no event will the CITY be obliged to disclose the amount budgeted for the Work.

## **21 CERTIFICATE OF RECOGNITION ("C.O.R.") SAFETY PROGRAM REQUIREMENT**

21.1 Unless otherwise stated, Tenders will only be considered when the Tenderer, prior to Tender Closing, has either full certification in the Ontario Labour approved Certificate of Recognition ("C.O.R.") Program appropriate to their industry or a temporary letter of certification issued by the Infrastructure Health & Safety Association or other appropriate industry association.

21.2 Certification shall be evident by inclusion of the Tenderers name on the Infrastructure Health & Safety Association ("I.H.S.A.") C.O.R. certification list current at the Tender Closing, or submission of a copy of the Ontario Labour Certificate of Recognition or a temporary letter of certification with the Tender.

21.3 The CITY will assume no liability for the non-inclusion of any Tenderer on the I.H.S.A. C.O.R. certification lists for any reason whatsoever.

21.4 The CITY reserves the right to terminate the Contract during the course of which the Contractor is decertified from the C.O.R. program or has their temporary letter of certification expire.

21.5 The CITY may reject any Tender which fails to comply with the provisions set out in Article 21.

## **22 CANADIAN FREE TRADE AGREEMENT**

22.1 The provisions of the Canadian Free Trade Agreement ("CFTA") apply to this Tender.

## **23 ACCEPTANCE OR REJECTION OF TENDERS**

23.1 As it is the purpose of the CITY to obtain the Tender most suitable and most advantageous to the interests of the CITY, and notwithstanding anything else contained within the Tender Documents, the CITY reserves the right, in its sole and unfettered discretion, to reject or accept any Tender, including the right to reject all Tenders. Without limiting the generality of the foregoing, any Tender which

- a) is incomplete, obscure, irregular or unrealistic;
- b) is non-compliant in a trivial/immaterial or substantial/material manner, or conditional;
- c) has erasures or corrections;
- d) omits a price on any one or more items in the Tender;
- e) fails to complete the information required in the Tender;
- f) is accompanied by an insufficient certified cheque, irrevocable letter of credit or by a Bid Bond in an unsatisfactory form,

may at the CITY's sole and unfettered discretion be rejected or accepted. Further, a Tender may be rejected or accepted on the basis of the CITY's unfettered assessment of its best interest, which includes the CITY's unfettered assessment as to a Tenderer's past work performance for the CITY or for anyone else or as to a Tenderer's financial capabilities, completion schedule, or ability to perform the Work, or the CITY's desire to reduce the number of different contractors on the location of the Work at any given time. The CITY reserves the right to negotiate after Tender Closing time with the Tenderer that the CITY deems has provided the most advantageous Tender; in no event will the CITY be required to offer any modified terms to any other Tenderer prior to entering into a Contract with the successful Tenderer and the CITY shall incur no liability to any other Tenderers as a result of such negotiation or modification.

## **24 LAW AND FORUM OF TENDER**

24.1 The law to be applied in respect of the Tender Documents and the Contract shall be the law of the Province of Ontario and all civil actions commenced in relation to the Tender Documents or Contract shall be adjudicated by the Courts of the Province of Ontario and by submitting Tenders, Tenderers are taken to have agreed to attorn to the jurisdiction of the Courts of the said Province.

## **25 ACCEPTANCE PERIOD**

25.1 The Tender shall be irrevocable and open for acceptance by the CITY for the period of time contained in the Invitation to Tender, namely, sixty (60) days following the end of the day of the Tender Closing. The time and date of the Tender Closing is as defined in the Invitation to Tender.



**CITY OF KENORA  
REQUEST FOR TENDER**

**ITT# 732-001-23B**

**APPENDIX A  
Additional Instructions to Tenderers**

## ADDITIONAL INSTRUCTIONS TO TENDERERS

### 1 Tender Timelines

1.1 The following is the schedule for the bid call:

Issue Date of Request for Tender	June 22, 2026
Mandatory Site Visit	July 6, 2026, 10:00 (CDT)
Deadline for Questions	July 8, 2026, 16:00 (CDT)
Deadline for Issuing Addenda	July 10, 2026, 16:00 (CDT)
Tender Closing	July 16, 2026, 11:00 (CDT)

### 2 Tender Inquiries and Addenda

2.1 All questions or requests for clarification regarding this Tender must be submitted by email only to the following representatives:

2.1.1 Byron Cook: [byron.cook@stantec.com](mailto:byron.cook@stantec.com)

2.1.2 Tino Mpofu: [tmpofu@kenora.ca](mailto:tmpofu@kenora.ca)

2.2 Tenderers are responsible for ensuring they have received all Addenda issued by the CITY prior to Tender Closing.

### 3 Mandatory Site Visits

3.1 A mandatory site visit for Tenderers will be held on July 6<sup>th</sup>, 2026, commencing at 10:00 am. CDT.

3.2 Attendees to confirm attendance with Tino Mpofu via email at [tmpofu@kenora.ca](mailto:tmpofu@kenora.ca).

3.3 Attendees are to assemble in the lobby area of the Moncrief Sports Centre located at 18 Mike Richards Way, Kenora, Ontario.

3.4 Bidders participating in the Site Walkthrough are required to sign in.

4 Tenderers who do not attend the mandatory site visit and sign the attendance sheet may have their Tender rejected by the CITY.

### 5 Tenderer's Preliminary Construction Schedule

5.1 Tenderers shall submit a preliminary Construction Schedule identifying major milestones, anticipated equipment lead times, and the Tenderer's proposed completion date.



**CITY OF KENORA  
REQUEST FOR TENDER**

**ITT# 732-001-23B**

**APPENDIX B  
General Requirements**

# GENERAL REQUIREMENTS

## 1 SUMMARY OF WORK

### 1.1 Description of Work

- 1.1.1 The Work consists of all labour, materials, equipment, tools, supervision, and incidentals required to complete the Walkway Bridge Replacement as described in the Contract Documents.

### 1.2 Commencement of Work

- 1.2.1 The Contractor shall not commence Work on site until September 24<sup>th</sup> 2026.

### 1.3 Contract Time

- 1.3.1 The Contractor shall achieve Substantial Performance of the Work no later than November 23<sup>rd</sup> 2026.
- 1.3.2 The Contractor shall achieve Ready-for-Takeover of the Work no later than December 10<sup>th</sup> 2026.

### 1.4 Contract Administration

- 1.4.1 The Contract shall be administered in accordance with CCDC 2 – 2020, Stipulated Price Contract, including any Supplementary Conditions and the requirements of the Contract Documents.

## 2 PROJECT COORDINATION

### 2.1 Meetings

- 2.1.1 A construction kick-off meeting shall be held by the Owner.
- 2.1.2 The Contractor shall coordinate and chair bi-weekly progress meetings as required by the Owner.
- 2.1.3 The Contractor shall prepare and distribute meeting minutes to the Owner and Consultant within five (5) Working Days following each meeting.
- 2.1.4 At a minimum, the meeting agenda shall include the following items:
  - Review of previous meeting minutes and outstanding action items;
  - Review of construction schedule and progress of the Work;
  - Upcoming work activities and milestones;
  - Shop drawings and submittal status;
  - Material procurement, fabrication, and delivery status;
  - Required inspections, reviews, and approvals;
  - Site conditions, unforeseen conditions, and issues requiring direction;

- Review of health and safety matters, including any incidents or concerns;
- Requests for Information (RFIs), clarifications, and pending decisions;
- Potential changes to the Work and associated impacts to cost or schedule;
- Review of deficiencies and corrective actions;

## 2.2 Construction Review and Notification

2.2.1 Provide a minimum of two (2) business days with written notice to the Owner and Consultant prior to the following milestones:

- Completion of existing walkway removal to permit review of existing concrete conditions at each end of the walkway prior to installation of the new walkway.
- Completion of the new walkway installation for final review by the Owner and Consultant.

2.2.2 The Contractor shall provide progress photographs throughout construction.

## 2.3 Unforeseen Conditions

2.3.1 Where conditions are encountered that differ materially from those indicated in the Contract Documents, the Contractor shall immediately notify the Owner and Consultant.

2.3.2 Do not proceed with corrective work until direction is provided by the Owner or Consultant.

## 2.4 Work Restrictions Within Facility

2.4.1 Work may be completed during operations hours from Monday to Friday between 7:00 hrs. and 21:00 hrs. unless otherwise approved by the Owner.

2.4.2 Coordinate noisy, disruptive, or hazardous activities with the Owner and perform such activities at times acceptable to the Owner.

2.4.3 The Contractor shall provide and maintain temporary barriers, hoarding, enclosures, signage, and other protective measures as necessary to protect the public, facility occupants, and the Place of the Work during the performance of the Work.

2.4.4 The Contractor shall comply with all applicable federal, provincial, and municipal regulatory requirements, including all applicable health and safety requirements.

2.4.5 Maintain temporary barriers and enclosures in safe and good condition for the duration of the Work.

- 2.4.6 Remove temporary barriers and enclosures from Place of the Work upon completion of the Work or no longer required.

### **3 SUBMITTAL PROCEDURES**

#### **3.1 Shop Drawings**

- 3.1.1 Submit shop drawings and required submittals sufficiently in advance to prevent delays to the Work.
- 3.1.2 Allow a minimum of ten (10) Working Days for review of each shop drawing submission by the Consultant.
- 3.1.3 Where shop drawings are returned requiring revisions, allow additional time for subsequent reviews.

### **4 REGULATORY REQUIREMENTS**

#### **4.1 Permits and Inspections**

- 4.1.1 The Contractor shall obtain all permits required for the performance of the Work unless otherwise specified in the Contract Documents.
- 4.1.2 The Contractor shall coordinate all inspections required by authorities having jurisdiction.
- 4.1.3 Provide copies of permits, inspection reports, approvals, and other documentation requested by the Owner.

### **5 QUALITY CONTROL**

#### **5.1 Non-Conforming Work**

- 5.1.1 Work that does not conform to the requirements of the Contract Documents shall be corrected by the Contractor at no additional cost to the Owner.

### **6 CLOSEOUT PROCEDURES**

#### **6.1 Request for Substantial Performance**

- 6.1.1 The prerequisites to, and the procedures for, attaining substantial performance of the Work, or similar milestones provided for in the lien legislation applicable to the Place of the Work, shall be:
- independent of those for attaining Ready-for-Takeover of the Work, and
  - in accordance with the lien legislation applicable to the Place of the Work.
- 6.1.2 The Contractor shall make an application to the Owner and Consultant in writing when the Work is substantially complete and ready for review.

## 6.2 Deficiency Review and Correction

6.2.1 Upon receipt of the request for Substantial Performance, the Owner and Consultant will conduct a review of the Work and prepare a deficiency list identifying incomplete or deficient items.

6.2.2 The Contractor shall correct all identified deficiencies within the timeframe established by the Owner or as mutually agreed.

## 6.3 Ready-for-Takeover

6.3.1 The prerequisites for attaining Ready-for-Takeover of the Work are described in the General Conditions of the Contract.

## 6.4 Inspection and review before ready-for-takeover

6.4.1 Contractor's Inspection: Before applying for the Consultant's review to establish Ready-for-Takeover of the Work:

- Ensure that the specified prerequisites to Ready-for-Takeover of the Work are completed.
- Conduct an inspection of the Work to identify defective, deficient, or incomplete work.
- Prepare a comprehensive and detailed list of items to be completed or corrected.
- Provide an anticipated schedule and costs for items to be completed or corrected.

6.4.2 Consultant's Review: Upon receipt of the Contractor's application for review, together with the Contractor's list of items to be completed or corrected, the Consultant and the Contractor shall arrange a mutually satisfactory agreed date and time to jointly review the Work. The Consultant will advise the Contractor whether or not the Work is Ready-for-Takeover. Add additional items, if any, to the Contractor's list of items to be completed or corrected. Provide the Consultant with a copy of the revised list.

6.4.3 Maintain the list of items to be completed or corrected and promptly correct or complete defective, deficient and incomplete work. The Contractor's inspection and Consultant's review procedures specified above shall be repeated until the Work is Ready-for-Takeover and no items remain on the Contractor's list of items to be completed or corrected.

6.4.4 When the Consultant determines that the Work is Ready-for-Takeover, the Consultant will notify the Contractor and the Owner in writing to that effect.

## 6.5 Owner Training

6.5.1 Prior to Ready-for-Takeover, provide a training session for the Owner's operations and maintenance personnel.

6.5.2 The training shall include, at a minimum:

- Overview of the completed walkway and its components;
- Review of the Operation and Maintenance manuals;
- Recommended inspection and maintenance procedures;
- Identification of signs of deterioration, corrosion, damage, wear, or loosening of components;
- Warranty requirements and procedures for reporting defects.

## 6.6 Warranty

6.6.1 Provide a warranty covering defects in materials and workmanship for a period of one (1) year commencing from the date of Ready-for-Takeover date as defined in CCDC 2 – 2020 GC 12.3.

6.6.2 Submit all manufacturer warranties to the Owner prior to Ready-for-Takeover.

6.6.3 Manufacturer warranties shall not limit the Contractor's responsibility to correct defects covered under the Contract warranty

## 6.7 Operation and Maintenance Manuals

6.7.1 The Contractor shall submit complete Operation and Maintenance (O&M) manuals to the Owner no later than ten (10) business days prior to the anticipated Ready-for-Takeover date.

6.7.2 O&M manuals shall include, at a minimum:

- Manufacturer product data and technical literature;
- Operating instructions for new systems and components;
- Recommended inspection, maintenance, and cleaning procedures;
- Preventative maintenance schedules;
- Recommended spare parts, where applicable;
- Manufacturer warranty information;
- Supplier and manufacturer contact information.

6.7.3 Where existing equipment is retained and integrated with the new Work, the Contractor shall provide documentation describing:

- The interface between the existing equipment and the new Work;
- Any modifications made to the existing equipment;
- Any revised operating procedures or maintenance requirements resulting from the Work.

- 6.7.4 Existing equipment that is retained without modification, including existing winches, is excluded from the O&M manual submission requirements unless otherwise specified in the Contract Documents.



**CITY OF KENORA  
REQUEST FOR TENDER**

**ITT# 732-001-23B**

**APPENDIX C  
General Specifications**

**Part 1            General**

**1.01            REFERENCE STANDARDS**

- .1 Canadian Standards Group (CSA)
  - .1 CSA S350-M 1980 (R2003) - Code of Practice for Safety in Demolition of Structures

**1.02            QUALITY ASSURANCE**

- .1 Regulatory Requirements: Ensure Work is performed in compliance with CSA S350-M and applicable Provincial and Municipal regulations.

**1.03            EXAMINATION**

- .1 Carefully examine drawings and site conditions to determine the full extent of demolition and renovation work to be performed and materials and conditions encountered.

**1.04            EXISTING CONDITIONS**

- .1 Take over elements to be demolished generally based on their condition during the Bid Period. Note items to be salvaged by Owner if applicable.
- .2 Do not remove from the building, without the consent of the Owner, any of the Owner's furniture, equipment, tools, or non-building components.
- .3 Arrange and pay for disconnecting, removing and capping utility service within areas of demolition as required.
- .4 Notify affected utility company prior to commencement of activities.
- .5 Place markers to indicate location of disconnected services. Identify service lines and capping locations on Record drawings.
- .6 Demolition of asbestos containing materials (ACM) can be hazardous to health. Should material resembling spray or trowel-applied asbestos be encountered during demolition, stop work and notify the Consultant immediately. Do not proceed until written instructions have been received from the Consultant.

**1.05            DEMOLITION INFORMATION**

- .1 Where required by authorities having jurisdiction, submit for approval drawings, diagrams or details showing sequence of disassembly work and supporting structures and underpinning.
- .2 Provide information, in a form set out by the authorities having jurisdiction, including the stamp of qualified professional engineer registered in the Province of Ontario.

**1.06            PROTECTION**

- .1 Prevent movement or settlement of structures. Provide and place bracing or shoring and be responsible for safety and support of structure. Be liable for any such damage or injury caused.
- .2 If safety of structure appears to be endangered, cease operations, and notify the Consultant immediately. Take all precautions to properly support structure. Do not resume operations until acceptable to the Consultant.
- .3 Erect access resistant and weatherproof enclosures as required to close off exterior openings. Maintain free and safe passage to and from the building exits.

- .4 Erect and maintain dustproof partitions as required to prevent spread of dust, fumes, and smoke to other parts of the building. Provide plastic tarps to protect furniture, fixed millwork, and bookcases, from dust and debris. On completion, remove partitions and tarps, and make good, damaged surfaces to match adjacent surface.
- .5 Prevent any dust from entering the air handling systems. Inspect air filters and clean or replace during period system is in use, and prior to turnover.
- .6 Prevent all construction debris from blocking surface drainage inlets and systems or mechanical and electrical systems, which must remain in operation.
- .7 During the removal of the existing building elements provide proper protection from falling objects.
- .8 Post warning signs which are clearly visible.
- .9 Carry out demolition work in a manner to cause minimal inconveniences to the adjacent occupied area.

**Part 2 Products**

**2.01 NOT USED**

- .1 Not Used.

**Part 3 Execution**

**3.01 DEMOLITION**

- .1 Perform demolition of existing work necessary to accommodate new and remedial work indicated on the drawings and /or described in the specifications. This shall include all necessary demolition work and all miscellaneous cutting required for the installation or extension of services.
- .2 Repair all demolition performed more than that indicated or required to the approval of the Consultant, at no cost to the Owner.
- .3 Remove existing equipment, services, and obstacles where required for refinishing or making good existing surfaces and replace same as work progress.
- .4 At the end of each day's work, leave the building, site, and work in a safe secure condition. Protect interiors or parts not to be demolished from exterior elements.
- .5 Demolish to minimize dusting. Keep materials wetted as necessary.

**3.02 RENOVATION**

- .1 Carefully remove, store, protect and re-install in building, using qualified tradesmen, materials and equipment as required.
- .2 Patch and make good existing surfaces to provide neat, uniform finish and to blend smoothly with surrounding surfaces.
- .3 Patch and make good all disturbed surfaces to match existing adjacent work. Leave finished, neat, to Consultant's approval.
- .4 Patch all surfaces with materials to match existing, to maintain fire and acoustic ratings, and structural integrity.

**3.03 DISPOSAL**

- .1 Dispose of demolished materials except where noted otherwise.
- .2 Selling or burning materials on site is not permitted.
- .3 Remove contaminated or dangerous materials from work site and dispose of in safe manner to minimize danger at site and during disposal.
- .4 Deliver all refuse materials to a registered landfill site and pay all costs of disposal.
- .5 Employ rodent and vermin exterminators as required, to comply with current health regulations.
- .6 Leave the site in a condition acceptable to the Consultant.

**3.04 SALVAGE TO OWNER**

- .1 Discuss with Owner's representative requirements for salvage of any materials, components or equipment prior to starting the work.
- .2 Carefully remove any existing materials, components or equipment, maintaining the existing condition if applicable.
- .3 Materials or equipment to be turned over to the Owner shall be stored on site in a location determined by the Owner. These materials or equipment become the Owner's responsibility upon removal from the area of work.
- .4 Materials or equipment to be re-used in the Work, shall be cleaned, and made good as specified, and stored and protected on site prior to reinstallation. The Contractor is responsible for these materials or equipment and must be replaced or repaired if stolen or damaged while stored on site.
- .5 Remaining materials, components or equipment not salvaged or to be re-used shall be properly disposed of in accordance with 3.03 Disposal.

**END OF SECTION**

**Part 1            General**

**1.01            RELATED REQUIREMENTS**

- .1        Section 05 50 00 – Metal Fabrications

**1.02            REFERENCE STANDARDS**

- .1        ASTM
  - .1        ASTM A108-18, Standard Specification for Steel Bar, Carbon and Alloy, Cold-Finished.
  - .2        ASTM A123/A123M-17, Standard Specification for Zinc (Hop-Dip Galvanized) Coatings on Iron and Steel Products.
  - .3        ASTM A153/A153M-16a, Standard Specification for Zinc Coating (Hot-Dip) on Iron and Steel Hardware.
  - .4        ASTM A563/A563M-21, Standard Specification for Carbon and Alloy Steel Nuts.
  - .5        ASTM F436/F436M-19, Standard Specification for Hardened Steel Washers Inch and Metric Dimensions.
  - .6        ASTM F1554-20, Specification for Anchor Bolts, Steel, 36, 55 and 105-ksi Yield Strength.
  - .7        ASTM F3125/F3125M-22, Standard Specification for High Strength Structural Bolts, Steel and Alloy Steel, Heat Treated, 120 ksi (830 MPa) and 150 ksi (1040 MPa) Minimum Tensile Strength, Inch and Metric Dimensions.
- .2        Canadian General Standards Board (CGSB)
  - .1        CGSB 85-GP-14M, Painting Steel Surfaces Exposed to Normally Dry Weather.
  - .2        CAN/CGSB-85.100-93, Painting.
- .3        Canadian Institute of Steel Construction/Canadian Paint Manufacturer's Association (CISC/CPMA).
  - .1        CISC/CPMA 1-73a, Quick-Drying, One-Coat Paint for Use on Structural Steel.
  - .2        CISC/CPMA 2-75, Quick-Drying, Primer for use on Structural Steel.
- .4        Canadian Standards Association (CSA)
  - .1        CSA G40.20-13/G40.21-13 (R2023), General Requirements for Rolled or Welded Structural Quality Steel/Structural Quality Steels.
  - .2        CSA S16:24, Design of Steel Structures.
  - .3        CSA S136-16 (R2021), Cold Formed Steel Structural Members.
  - .4        CSA W47.1:25, Certification of Companies for Fusion Welding of Steel Structures.
  - .5        CSA W48-23, Filler Metals and Allied Materials for Metal Arc Welding.
  - .6        CSA W55.3:08, Resistance Welding Qualification Code for Fabricators of Structural Members Used in Buildings.
  - .7        CSA W59:24, Welded Steel Construction (Metal Arc Welding).

- .8 CSA W178.1:18 (R2023), Certification of Welding Inspection Organizations.
- .9 CSA W178.2:18 (R2023), Certification of Welding Inspectors.
- .10 CSA W186:21, Welding of Reinforcing Bars in Reinforced Concrete Construction.

### **1.03 SHOP DRAWINGS**

- .1 Submit shop drawings including fabrication and erection documents and materials, via email (in pdf format), to the design consultant for review prior to fabrication. Contactor shall allow sufficient time within the construction schedule for consultant's review.
- .2 On erection drawings, indicate all details and information necessary for assembly and erection purposes such as, description of methods, sequence of erection, type of equipment used in erection and temporary bracings.
- .3 Ensure fabricator designed assemblies, components, and connections and drawings are sealed and signed by qualified Professional Engineer licensed in the Province of Ontario.

### **1.04 DESIGN OF DETAILS AND CONNECTIONS**

- .1 Design details and connections to CSA S16 and CSA S136 to resist forces, moments, and shears and allow for movements indicated
- .2 If connection for shear only (standard connection) is required:
  - .1 Select framed beam shear connections from an industry accepted publication such as "Handbook of the Canadian Institute of Steel Construction".
  - .2 If shears are not indicated, select or design connections to support reaction from maximum uniformly distributed load that can be safely supported by beam in bending, provided no point loads act on beam.
- .3 For non-standard connections, submit sketches and design calculations stamped and signed by qualified professional engineer licensed in Province of Manitoba, Canada.

### **1.05 QUALITY ASSURANCE**

- .1 Ensure Fabricator of structural steel, provides an affidavit stating that materials and products used in fabrication conform to applicable material and products standards called for by design drawings and specifications.

## **Part 2 Products**

### **2.01 MATERIALS**

- .1 Structural Steel: CSA G40.20/G40.21, Grade 350W and as indicated on Drawings and CSA S136.
- .2 Anchor Bolts: CSA G40.20/G40.21, Grade 300W.
- .3 Bolts, Nuts, and Washers: ASTM F3125/F3125M.
- .4 Welding Materials: CSA W59 and certified by Canadian Welding Bureau.
- .5 Shop Paint Primer:
  - .1 Where steel is not to be field painted: CISC/CPMA 1-73a.
  - .2 Where steel is to be field painted: CISC/CPMA 2-75. Use same primer specified in Section 09 91 00 – Painting, for finishing formulae for steel surfaces.

## **2.02 FABRICATION**

- .1 Fabricate structural steel to CSA S16, CSA S136, and to reviewed shop drawings.
- .2 Continuously seal members using continuous welds. Grind smooth.

## **2.03 SHOP PAINTING**

- .1 Clean, prepare surfaces and shop prime structural steel in accordance with CSA S16, CSA S136, and CAN/CGSB-85.100-93 except where members to be encased in concrete.
- .2 Clean all members. Remove loose mill scale, rust, oil, dirt and other foreign matter. Prepare surfaces as required for CISC/CPMA 1-73a and CISC/CPMA 2-75.
- .3 Apply one coat of primer in shop to all steel surfaces to achieve minimum dry film thickness of 0.04 to 0.065 mils, except:
  - .1 VOC content not to exceed 250 g/L.
  - .2 Surfaces to be encased in concrete.
  - .3 Surfaces to receive field installed stud shear connections.
  - .4 Surfaces and edges to be field welded.
- .4 Apply paint under cover, on dry surfaces when surfaces and air temperatures are above 5°C.
- .5 Maintain dry condition and 5°C minimum temperature until paint is thoroughly dry.
- .6 Strip paint from bolts, nuts, sharp edges, and corners before prime coat is dry.

## **Part 3 Execution**

### **3.01 GENERAL**

- .1 Structural steel work: to CSA S16 and CSA S136.
- .2 Welding: to CSA W59.
- .3 Companies to be certified under Division 1 or 2 of CSA W47.1 for fusion welding of steel structures and/or CSA W55.3 for resistance welding of structural components.

### **3.02 CONNECTION TO EXISTING WORK**

- .1 Verify dimensions and condition of existing work, report any discrepancy and potential problem areas to the Consultant for direction before commencing fabrication.

### **3.03 MARKING**

- .1 Mark materials in accordance with CSA G40.20-13/G40.21-13. Do not use die stamping. If steel is to be left in unpainted condition, place marking at locations not visible from exterior after erection.
- .2 Match marking: shop mark bearing assemblies and splices for fit and match.

**3.04 ERECTION**

- .1 Erect structural steel, as indicated and to CSA S16, CSA S136, and to reviewed erection drawings.
- .2 Field cutting or altering structural members: to be reviewed by Consultant.
- .3 Clean with mechanical brush and touch up shop primer to bolts, rivets, welds, and burned or scratched surfaces at completion of erection.
- .4 Continuously seal members by continuous smooth welds where indicated. Grind smooth as required.

**3.05 FIELD PAINTING**

- .1 Touch up primer damaged during erection with same materials as shop applied. Make all steel surfaces ready for finish painting.
- .2 First and final topcoat finish painting to be coordinated by and work completed as directed by the General Contractor.

**END OF SECTION**

**Part 1 General**

**1.01 SUMMARY**

.1 Section Includes:

- .1 Pipe railings.
- .2 Walkways.

**1.02 RELATED REQUIREMENTS**

.1 Section 06 74 13 - Fiberglass Reinforced Gratings: For walkway grating components.

**1.03 DEFINITIONS**

.1 Delegated Design Professional Engineer: The professional engineer hired or contracted to the contractor, fabricator, or manufacturer to design specialty elements, produce delegated design submittals and shop drawings to meet the requirements of the Authorities Having Jurisdiction; and registered in the Province of Ontario; and who is not the Consultant.

**1.04 REFERENCE STANDARDS**

.1 ASTM

- .1 ASTM A53/A53M, Specification for Pipe, Steel, Black and Hot-Dipped, Zinc-Coated Welded and Seamless.
- .2 ASTM A307, Specification for Carbon Steel Bolts and Studs, 60,000 psi Tensile.

.2 Canadian General Standards Board (CGSB)

- .1 CAN/CGSB-1.40, Anti-corrosive Structural Steel Alkyd Primer.
- .2 CAN/CGSB-1.108, Bituminous Solvent Type Paint.

.3 Canadian Standards Association (CSA)

- .1 CSA-G40.20/G40.21, General Requirements for Rolled or Welded Structural Quality Steel.
- .2 CSA W48 Series, Electrodes for Welding
- .3 CSA W59, Welded Steel Construction (Metal Arc Welding).

.4 Province of Ontario

- .1 Ontario Building Code 2024 (OBC) including Ontario amendments

.5 The Society for Protective Coatings (SSPC)

- .1 SSPC Painting Manual, Volume 2, Systems and Specifications.

**1.05 ADMINISTRATIVE REQUIREMENTS**

.1 Coordination:

- .1 Coordinate installation of glass-fiber-reinforced-plastic gratings with Section 06 74 13. Furnish setting drawings, templates, and directions for installing anchorages, anchor bolts, and items with integral anchors, that are to be anchored to metal fabrications. Deliver such items to Project site in time for installation.

## **1.06 ACTION AND INFORMATIONAL SUBMITTALS**

- .1 Submit shop drawings including fabrication and erection documents and materials, via email (in pdf format), to the design consultant for review prior to fabrication. Contactor shall allow sufficient time within the construction schedule for consultant's review.
- .2 Shop Drawings: Indicate materials, core thickness, finishes, connections, joints, method of anchorage, number of anchors, supports, reinforcement, details, and accessories. Indicate field measurements on shop drawings.
- .3 Delegated-Design Submittal: For installed products indicated to comply with performance requirements and design criteria, including analysis data signed and sealed by the qualified professional engineer responsible for their preparation.
  - .1 Guardrails and railings.
  - .2 Walkways.

## **1.07 DELIVERY, STORAGE, AND HANDLING**

- .1 Deliver, store, handle and protect materials in accordance with good workmanship standards.

## **Part 2 Products**

### **2.01 PERFORMANCE / DESIGN CRITERIA**

- .1 Delegated Design: Design railings, guards, and stairs including comprehensive engineering analysis by qualified professional engineer, using performance requirements, criteria indicated.
- .2 Fabricate and install metal fabrications to withstand all stresses encountered in normal use. Unless specified or noted otherwise, all imposed live loads shall be in accordance with OBC.
- .3 Design, Fabricate and install handrails and guardrails in to withstand imposed live and dead loads in accordance with OBC.

### **2.02 COMPONENTS, GENERAL**

- .1 Examine the drawings and specifications and provide metal fabrication items required for the proper execution of this project.
- .2 Items described herein do not necessarily indicate the full scope of work of this Section. Provide all metal fabrication items that are not clearly the responsibility of other trades.
- .3 Items shall conform to detail and material indicated on the drawings or in the specifications. Supply items listed, but not specifically detailed or specified, as standard stock items, conforming to accepted standards of such work.

### **2.03 SITE CONDITIONS**

- .1 Field Measurements: Where metal fabrications are indicated to fit walls and other construction, verify dimensions by field measurements before fabrication and indicate measurements on Shop Drawings. Coordinate fabrication schedule with construction progress to avoid delaying the Work.
- .2 Established Dimensions: Where field measurements cannot be made without delaying the Work, establish dimensions and proceed with fabricating metal fabrications without field measurements. Coordinate construction to ensure that actual dimensions correspond to established dimensions. Allow for trimming and fitting.

## **2.04 MATERIALS**

- .1 Metal Surfaces, General: Provide materials with smooth, flat surfaces unless otherwise indicated. For components exposed to view in the completed Work, provide materials without seam marks, roller marks, rolled trade names, or blemishes.
- .2 Steel Sections and Plates: CAN/CSA-G40.20/G40.21, Grade 300W.
- .3 Cold Formed Steel Plate, Sheet, and Bars: CSA G40.20/G40.21.
- .4 Steel Pipe: ASTM A53/A53M, Type S, Grade B, weight class and finish as specified by item, of sizes indicated.
- .5 Welding Materials: CSA W59.
- .6 Welding Electrodes: CSA W48 Series.
- .7 Bolts and Anchor Bolts: ASTM A307.
- .8 Exposed Fasteners: Of same material, colour and finish as the metal to which applied, unless indicated otherwise.
- .9 Glass-Fiber-Reinforced-Plastic Gratings and Stair Treads: As specified in Section 06 74 13.

## **2.05 FABRICATION - GENERAL**

- .1 Fabricate work square, true, straight, and accurate to required size, with joints closely fitted and properly secured.
- .2 Use self-tapping shake-proof flat headed screws on items requiring assembly by screws or as indicated.
- .3 Where possible fit work and shop assemble ready for erection.
- .4 Ensure exposed welds are continuous for length of each joint. File or grind exposed welds smooth and flush.
- .5 Remove and grind smooth burrs, filings, sharp protrusions, and other projections from metal fabrications to prevent possible injury. Correct dangerous or potentially harmful installations.

## **2.06 WALKWAYS**

- .1 Detail and fabricate metal walkways to reviewed shop drawings.
- .2 Provide complete assemblies, including metal framing, hangers, struts, railings, clips, brackets, bearing plates, and other components necessary to support and anchor walkways and platforms on supporting structure.
  - .1 Join components by welding unless otherwise indicated.
  - .2 Use connections that maintain structural value of joined pieces.
- .3 Weld connections where possible, otherwise bolt connections. Countersink exposed fastenings, cut off bolts flush with nuts. Make exposed connections of same material, colour and finish as base material on which they occur.
- .4 Cut, drill, and punch metals cleanly and accurately. Remove burrs and ease edges to a radius of approximately 1 mm unless otherwise indicated. Remove sharp or rough areas on exposed surfaces.
- .5 Form bent-metal corners to smallest radius possible without causing grain separation or otherwise impairing work.
- .6 Form exposed work with accurate angles and surfaces and straight edges.

- .7 Welded Connections to Comply with the Following:
  - .1 Use materials and methods that minimize distortion and develop strength and corrosion resistance of base metals.
  - .2 Obtain fusion without undercut or overlap.
  - .3 Remove welding flux immediately.
  - .4 Weld exposed corners and seams continuously unless otherwise indicated.
  - .5 At exposed connections, finish exposed welds to comply with CISC Guide for Specifying Architecturally Exposed Structural Steel.
  - .6 Form exposed connections with hairline joints, flush and smooth, using concealed fasteners where possible. Where exposed fasteners are required, use Phillips flat-head (countersunk) screws or bolts unless otherwise indicated. Locate joints where least conspicuous.
- .8 Form walkway side rails from steel channels, size as shown.
- .9 Frames and Supports for Fiberglass Reinforced Gratings:
  - .1 Form grated landings from fiberglass reinforced gratings specified in Section 06 74 13, to profile indicated and secure to supports using manufacturers recommended anchors.
  - .2 Miter connections for perimeter angle frames. Cut, drill, and tap units to receive hardware and similar items.

## **2.07 PIPE GUARDS AND RAILS**

- .1 Construct pipe guard rails of steel components to sizes and profiles indicated, if not indicated as follows:
  - .1 Top and bottom rail: 48mm outside diameter standard pipe.
  - .2 Infill Panels: welded wire mech complete with perimeter channel to secure to supporting rails..
- .2 Fabricate pipe guards, walkways and railings with welded connections. Cope components at connections to provide close fit, or use fittings designed for this purpose. Weld all around at connections, including at fittings.

## **2.08 FINISHES**

- .1 Shop Coat Primer: CAN/CGSB-1.40.
- .2 Bituminous Paint: CAN/CGSB-1.108.

## **2.09 SHOP PAINTING**

- .1 Clean surfaces in accordance with SSPC Painting Manual, Volume 2, minimum SP3.
- .2 Apply one shop coat of primer to metal items, with exception of galvanized or concrete encased items.
- .3 Use primer unadulterated, as prepared by manufacturer. Paint on dry surfaces, free from rust, scale, or grease. Do not paint when temperature is lower than 7°C.
- .4 Clean surfaces to be field welded; do not paint.

**Part 3 Execution**

**3.01 INSTALLATION - GENERAL**

- .1 Do welding work in accordance with CSA W59 unless specified otherwise.
- .2 Erect metalwork in accordance with reviewed shop drawings, square, plumb, straight, and true, accurately fitted, with tight joints and intersections.
- .3 Exposed fastening devices to match finish and be compatible with material through which they pass.
- .4 Provide components for building by other sections in accordance with shop drawings and schedule.
- .5 Make field connections with bolts to CAN/CSA-S16.1, or weld.
- .6 Ensure exposed welds are continuous for length of each joint. File or grind exposed welds smooth and flush.
- .7 Hand items over for casting into concrete or building into masonry to appropriate trades together with setting templates.
- .8 Touch-up rivets, field welds, bolts and burnt or scratched surfaces after completion of erection with primer.

**3.02 INSTALLATION OF WALKWAYS**

- .1 Install in accordance with reviewed shop drawings.
- .2 Install plumb and true in exact locations, using welded connections wherever possible to provide rigid structure. Provide anchor bolts, bolts, and plates for connecting to structure.
- .3 Hand items over for casting into concrete or building into masonry to appropriate trades together with setting templates.
- .4 Do welding work in accordance with CSA W59 unless indicated specified otherwise.
- .5 Touch up shop primer to bolts, welds, and burned or scratched surfaces at completion of erection.

**3.03 INSTALLATION OF PIPE RAILINGS**

- .1 Install railings where indicated. Weld connections where assembled in sections. Grind welds smooth and make inconspicuous in final assembly. Remove burrs, weld spatter and other defects.
- .2 Bolt base plates to concrete with bolts and expansion anchors set in concrete. Use plain finish fasteners for interior railings.
- .4 At conclusion of installation run a soft cloth or bare hand over all surfaces noting locations of sharp weld splatter, neatly hand file to remove, apply touch up primer as required.

**3.04 CLEANING**

- .1 Perform cleaning as soon as possible after installation to remove construction and accumulated environmental dirt.
- .2 Upon completion of installation, remove surplus materials, rubbish, tools, and equipment barriers.
- .3 Touch-up Painting: Immediately after erection, clean field welds, bolted connections, and abraded areas of shop paint, and paint exposed areas with same material as used for shop painting to comply with SSPC-PA 1 for touching up shop-painted surfaces.
  - .1 Apply by brush or spray to provide a minimum 0.05-mm dry film thickness.

**END OF SECTION**

**Part 1 General**

**1.01 SUMMARY**

.1 Section Includes:

- .1 Fiberglass reinforced plastic (FRP) moulded gratings (Boardwalk Plank) with all appurtenances, and accessories.

**1.02 RELATED REQUIREMENTS**

- .1 Section 05 50 00 – Metal Fabrications: For walkways and landing framing components.

**1.03 REFERENCE STANDARDS**

.1 ASTM

- .1 ASTM D 635, Rate of Burning and/or Extent and Time of Burning of Self-Supporting Plastics in a Horizontal Position
- .2 ASTM E 84, Surface Burning Characteristics of Building Materials

**1.04 ADMINISTRATIVE REQUIREMENTS**

.1 Coordination:

- .1 Coordinate installation of anchorages for gratings with Section 05 50 00 - Metal Fabrications. Furnish setting drawings, templates, and directions for installing anchorages, including sleeves, anchor bolts, and items with integral anchors, that are to be anchored to metal fabrications. Deliver such items to Project site in time for installation.

**1.05 ACTION AND INFORMATIONAL SUBMITTALS**

- .1 Submit in accordance with Section 01 33 00 Submittals Procedures.

.2 Product Data: For each type of product.

- .1 Include construction details, material descriptions, dimensions of individual components and profiles, and finishes, including structural design data, structural properties data, grating and stair tread load/deflection tables, corrosion resistance tables, certificates of compliance, test reports as applicable, concrete anchor systems and their allowable load tables (as applicable) and design calculations for systems not sized or designed in the contract documents.

.3 Shop Drawings:

- .1 Manufacturer's shop drawings clearly showing material sizes, types, styles, part or catalog numbers, complete details for the fabrication of and erection of components including, but not limited to, location, lengths, type and sizes of fasteners, support member sizes, and connection details.

- .4 Delegated-Design Submittal: For gratings, including manufacturer's published load tables and analysis data.

- .5 Samples for Initial Selection: For each type of unit each type of exposed finish.

- .6 Samples for Verification: For each exposed product and for each colour and texture specified, 300 by 300 mm grating samples for landing grating.

**1.04 QUALITY ASSURANCE**

- .1 Qualifications:
  - .1 Manufacturers having a minimum of ten years experience in the design and manufacture of similar products and systems. Additionally, a record of at least five previous, separate, similar successful installations in the last five years shall be provided upon request by the Consultant.

**1.06 DELIVERY, STORAGE, AND HANDLING**

- .1 Deliver, store and handle materials in accordance with manufacturer's written instructions.
- .2 Deliver materials in original, unbroken pallets, packages, containers, or bundles bearing the label of the manufacturer.
- .3 Storage and handling Requirements:
  - .1 Handle products to prevent abrasion, cracking, chipping, twisting, other deformations, and other types of damage.

**1.07 SITE CONDITIONS**

- .1 Field Measurements: Verify actual locations of walls and other construction contiguous with gratings by field measurements before fabrication.

**Part 2 Products**

**2.01 MANUFACTURERS**

- .1 Acceptable Manufacturers:
  - .1 Fibergrate Composite Structures Inc.; 5151 Belt Line Road, Suite 1212 Dallas, Texas, 75254-7028, USA; Tel.: (800) 527-4043; Fax: (972) 250-1530; URL: [www.fibergrate.com](http://www.fibergrate.com); E-mail: [info@fibergrate.com](mailto:info@fibergrate.com)
  - .1 Distributor:
    - .1 Fibergrate Canada; 95 Sunray Street, Whitby, Ontario, L1N 9C9; (800) 263-3112; (905) 430-3056 Fax

**2.02 PERFORMANCE AND DESIGN CRITERIA**

- .1 Structural Performance: Gratings to withstand the effects of gravity loads and the following loads and stresses within limits and under conditions indicated.
  - .1 Walkways: Uniform load of 4.8 kPa.
  - .2 Limit deflection to L/360 or 6.4 mm (1/4 inch), whichever is less.

## **2.03 GLASS-FIBRE-REINFORCED-PLASTIC GRATINGS**

- .1 Pultruded Glass-Fibre-Reinforced Gratings: Dynaplank Boardwalk for pedestrian traffic, assembled from components made by simultaneously pulling glass fibres and extruding thermosetting plastic resin through a heated die under pressure to produce a product without voids and with a high glass-fibre content.
  - .1 Acceptable Products:
    - .1 Dynaplank Boardwalk Plank Grating.
  - .2 Resin: ISOFR
  - .3 Panel Depth: 47.6mm (1.88”).
  - .4 Plank Width: 260mm (10.25”)
  - .5 Traffic Surface: Aluminum oxide standard grit baked to the top surface.

## **2.04 ACCESSORIES**

- .1 Fasteners:
  - .1 Alloy Group 2 (A4) stainless steel bolts, ASTM F593, and nuts, ASTM F594.
  - .2 Select fasteners for type, grade, and class required.
- .2 Clip Assemblies: Type 316 stainless steel.

## **2.05 FABRICATION**

- .1 Cut, drill, and punch material cleanly and accurately. Remove burrs and ease edges to a radius of approximately 1 mm unless otherwise indicated. Remove sharp or rough areas on exposed surfaces.
- .2 Form gratings from materials of size, thickness, and shapes indicated, but not less than that needed to support indicated loads.
- .3 Fit exposed connections accurately together to form hairline joints.
- .4 Provide for anchorage of type indicated, coordinate with supporting structure. Fabricate and space the anchoring devices to secure gratings rigidly in place and to support indicated loads.

## **2.06 GRATING FRAMES AND SUPPORTS**

- .1 Frames and Supports for Fibreglass Reinforced Gratings: As specified in Section 05 50 00 - Metal Fabrications.

## **Part 3 Execution**

### **3.01 EXAMINATION**

- .1 Examine substrates areas and conditions, with Installer present, for compliance with requirements for installation tolerances and other conditions affecting performance of the Work.
- .2 Proceed with installation only after unsatisfactory conditions have been corrected.

**3.02           INSTALLATION**

- .1       Compliance: Comply with manufacturer's written data, including product technical bulletins, product catalogue installation instructions, product carton installation instructions, and data sheet.
- .2       Field cut and drill fiberglass reinforced plastic products with carbide or diamond tipped bits and blades. Provide adequate ventilation.
- .3       Sealing: Coat field fabricated grating cuts vinyl ester resin to provide maximum corrosion resistance.
- .4       Fasten gratings and stair treads securely in place with hold-down manufacturers clip assemblies.

**END OF SECTION**

*Lake of the Woods*  
**KENORA**



# **TENDER FORM**

**CITY OF KENORA**

**ITT# 732-001-23 B**

## TENDER FORM

Tender Number: \_\_\_\_\_

Tender Title:

We, \_\_\_\_\_  
(Company)

of \_\_\_\_\_  
(Business Address)

having examined the Tender Documents as issued by: the City of Kenora (the "City"), and having visited the site(s) of where the Work is required to be undertaken; hereby offer to enter into a Contract to perform the Work required by the Tender Documents for the Tender Sum as follows:

Item No.	Item	Amount (\$)
1	Mobilization, demobilization, temporary protection, and demolition of existing walkway	
2	Structural steel fabrication and installation, including connections and anchors	
3	FRP grating, railings, and miscellaneous metal components	
4	Project administration, submittals, inspections, testing, O&M manuals, training, and closeout	
5	Total Tender Price	

in Canadian funds, which price includes any specified cash and contingency allowances and the applicable taxes in force at this date and except as may be otherwise provided in the Tender Documents.

**Declarations:**

We hereby acknowledge and declare that:

- (a) we agree to perform the Work in compliance with the required completion schedule stated in the Contract;
- (b) no person, firm or corporation other than the undersigned has any interest in this Tender or in the proposed Contract for which this Tender is made;
- (c) the Tender Security is attached to this Tender. We specifically acknowledge and agree that the Tender Security may be forfeited to the City pursuant to the terms set forth in the Instructions to Tenderers;
- (d) we hereby acknowledge and confirm that the City has the right to accept any tender or to reject any or all tenders in accordance with the Instructions to Tenderers;
- (e) this Tender is open to acceptance for a period of sixty (60) days from the date of Tender Closing.

Signatures:

Signed, sealed and submitted for and on behalf of:

Company: \_\_\_\_\_  
(Name)

\_\_\_\_\_  
(Street Address or Postal Box Number)

\_\_\_\_\_  
(City, Province & Postal Code)

(Apply SEAL above)

Signature: \_\_\_\_\_

Name & Title: \_\_\_\_\_  
(Please Print or Type)

Witness: \_\_\_\_\_

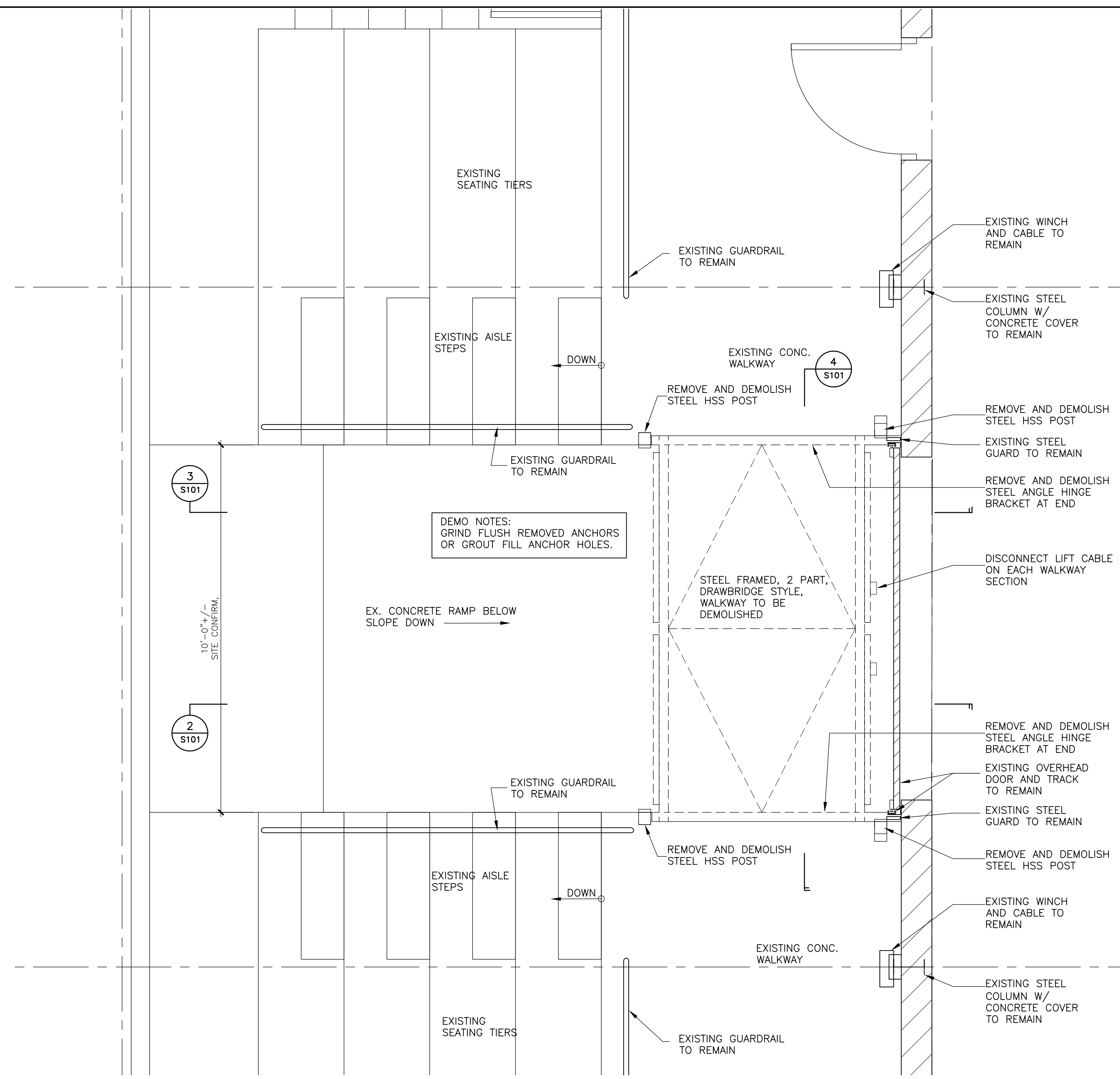
Dated at \_\_\_\_\_ this \_\_\_\_\_ day of \_\_\_\_\_, 20\_\_\_\_



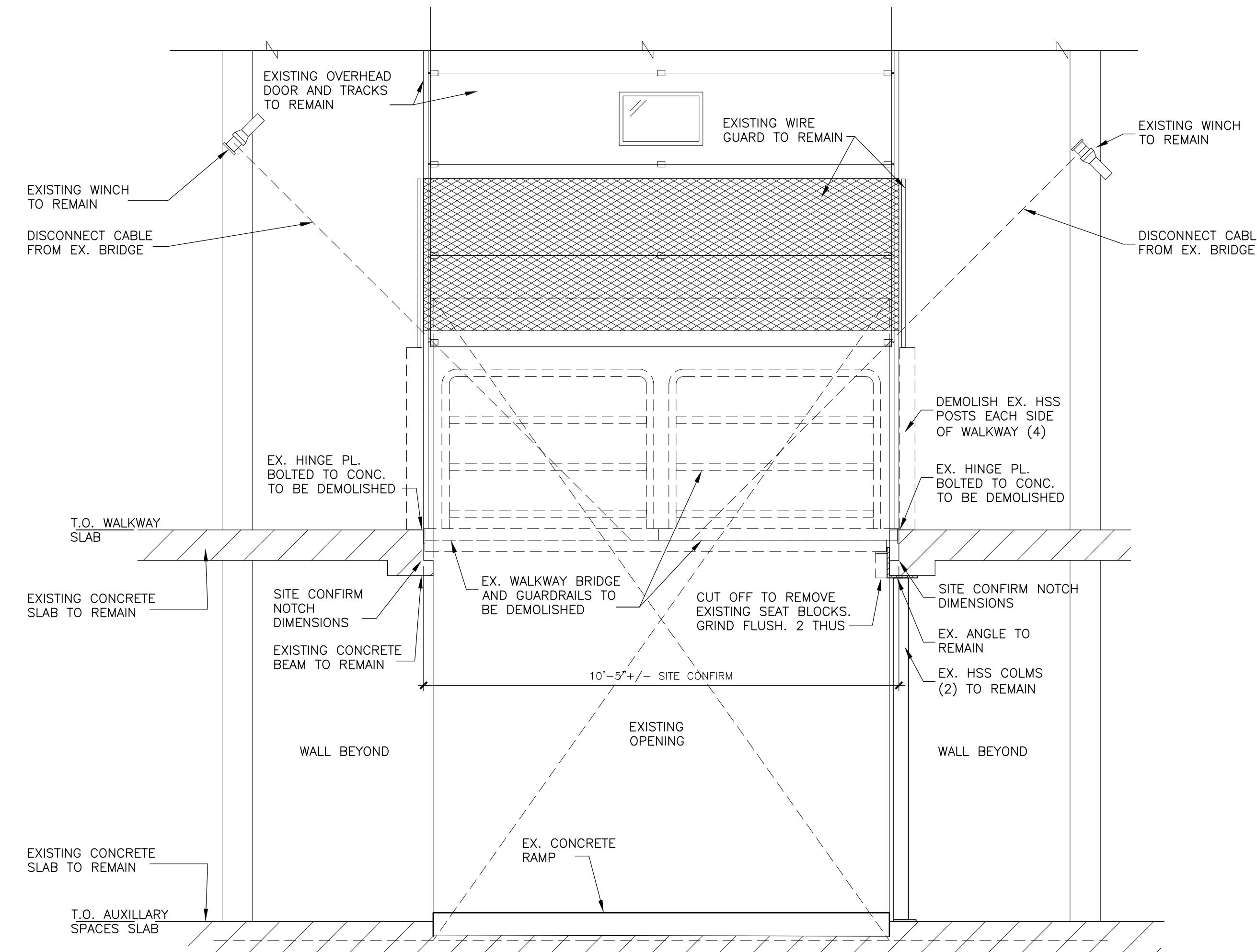
**CITY OF KENORA  
REQUEST FOR TENDER**

**ITT# 732-001-23B**

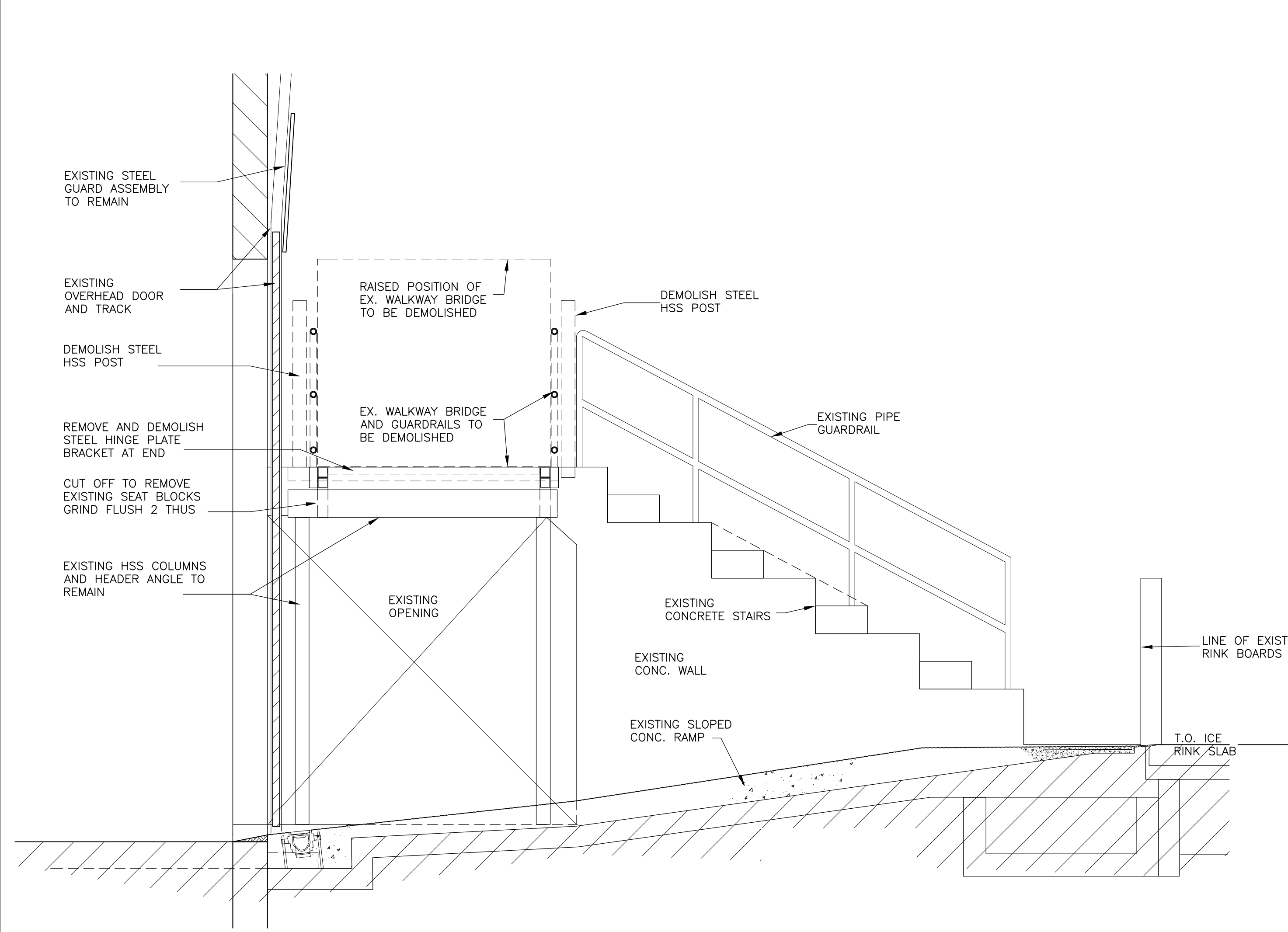
**APPENDIX D  
Design Drawings**



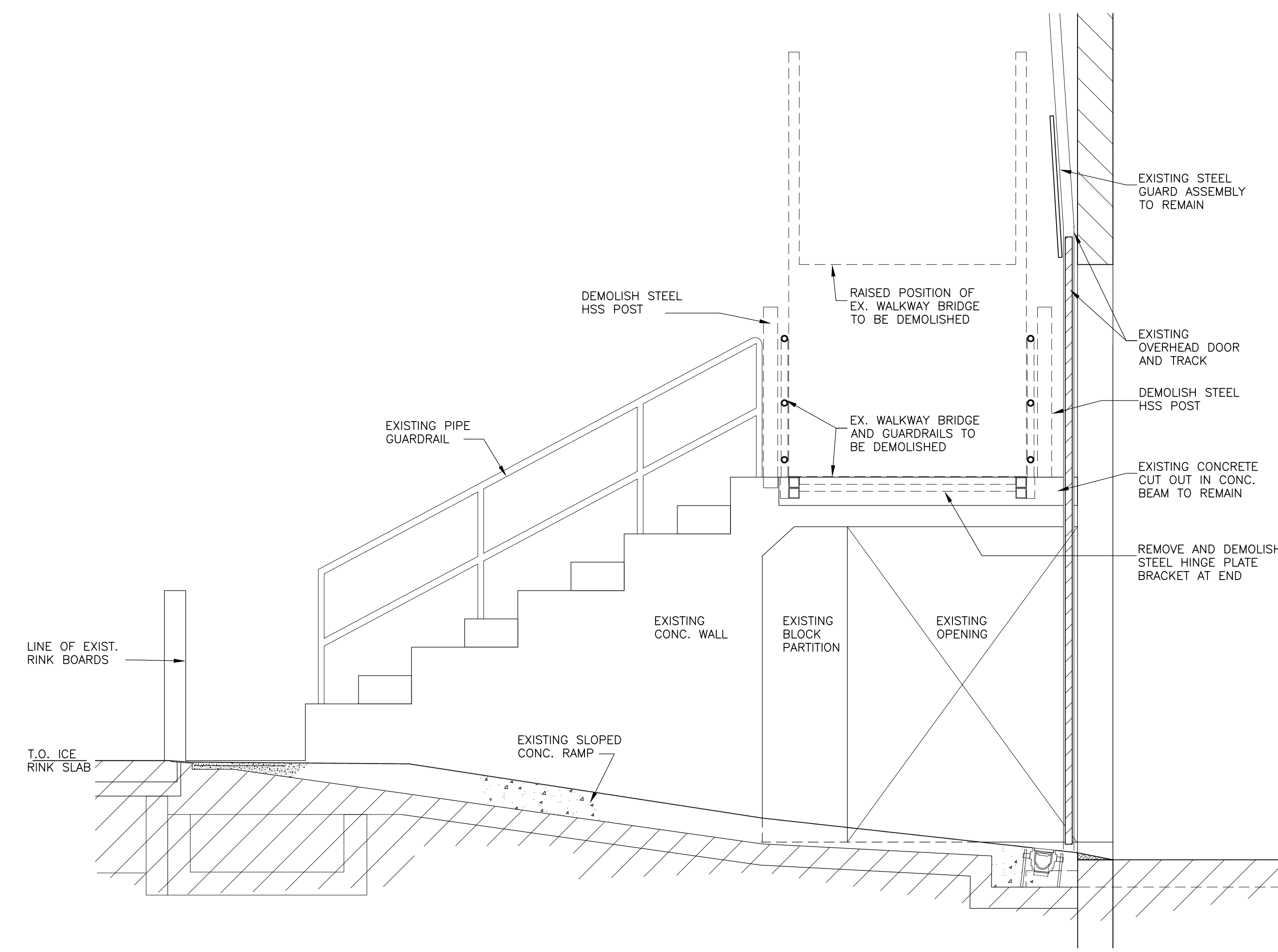
1 WALKWAY LEVEL PLAN - DEMOLITION  
 SCALE: 1/2"=1'-0"  
 PROJECT NORTH



4 WALKWAY SECTION - DEMOLITION  
 SCALE: 1/2"=1'-0"



2 WALKWAY SECTION - DEMOLITION  
 SCALE: 1/2"=1'-0"



3 WALKWAY SECTION - DEMOLITION  
 SCALE: 1/2"=1'-0"

Revision	By	Appd.	YY.MM.DD	
E	ISSUED FOR CONSTRUCTION	BC	BF	24.05.21
D	ISSUED FOR CLIENT REVIEW	BC	BF	24.03.25
C	ISSUED FOR CLIENT REVIEW	BC	BF	24.02.24
B	ISSUED FOR CLIENT REVIEW	BC	BF	24.01.22
A	ISSUED FOR CLIENT REVIEW	BC	BF	24.01.09

Issued By Appd. YY.MM.DD

File Name: 21022\_04-101 Dwn. Chkd. Dgn. YY.MM.DD

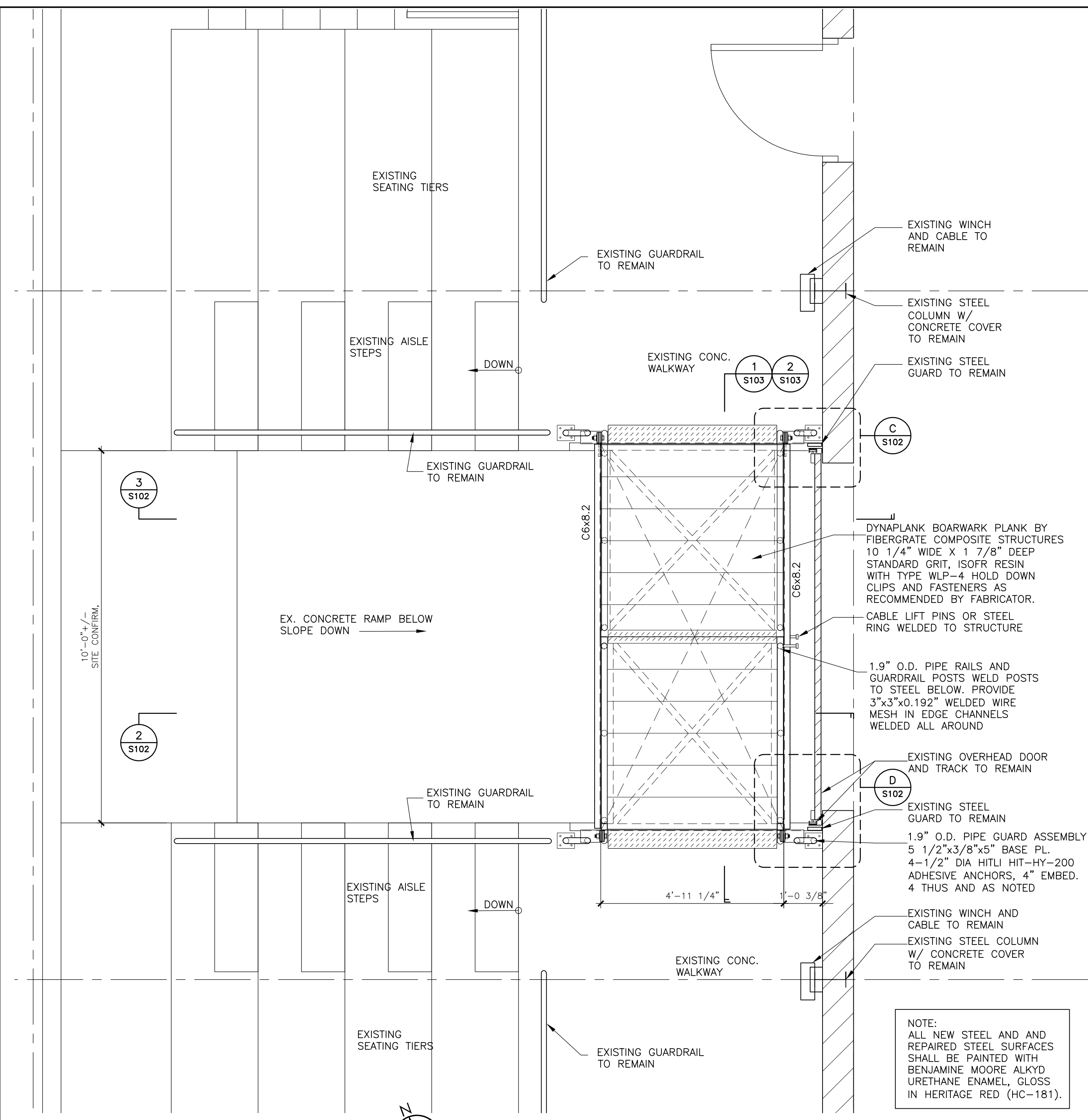


Client/Project  
 MONCRIEF CONSTRUCTION  
 SPORTS CENTRE  
 PROPOSED WALKWAY BRIDGE  
 RENOVATIONS  
 18 MIKE RICHARDS WAY, KENORA ONTARIO

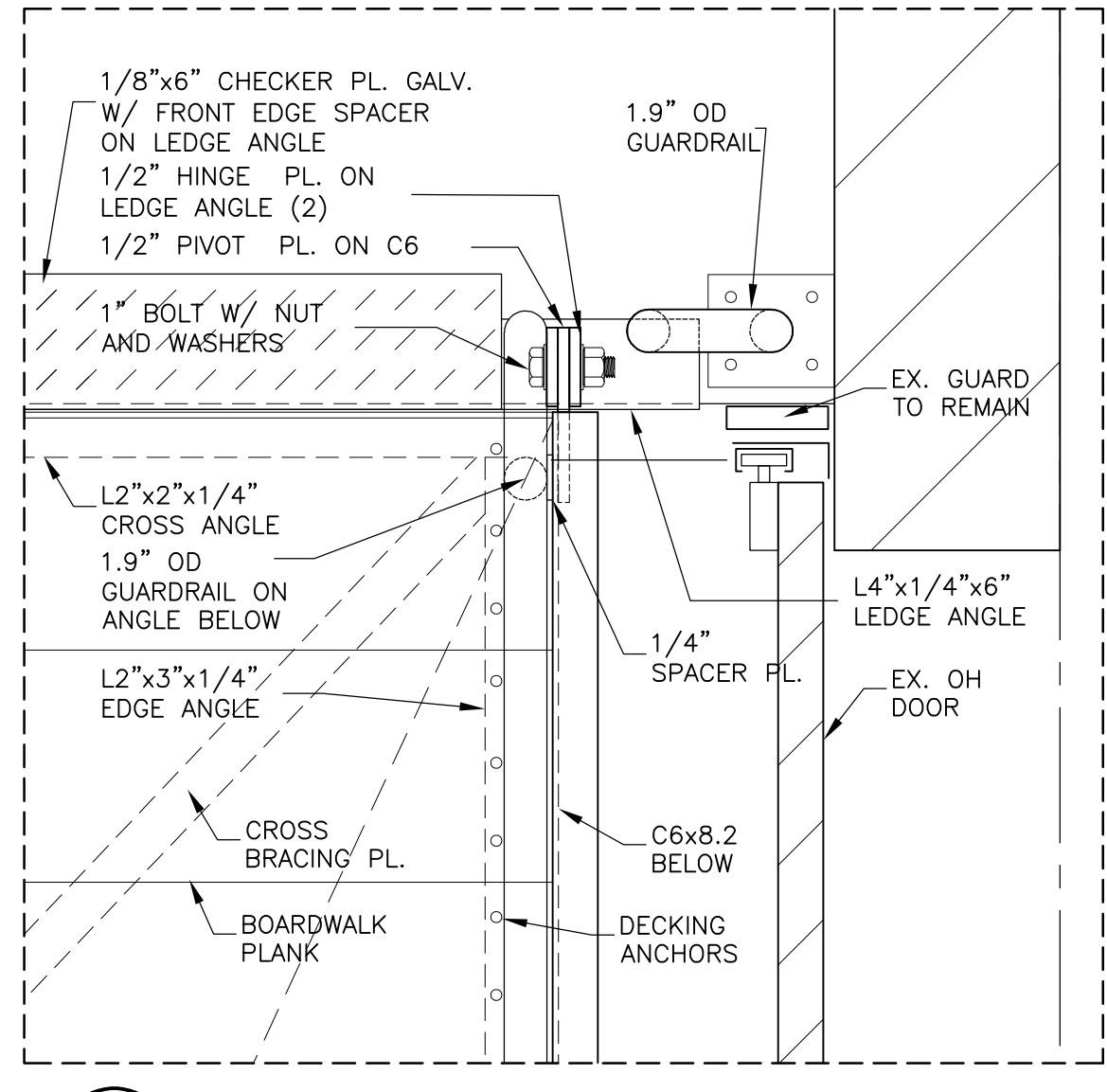
Title  
 WALKWAY BRIDGE PLANS  
 AND SECTIONS - DEMOLITION

Project No. 115425047	Scale AS NOTED
Drawing No.	Sheet Revision

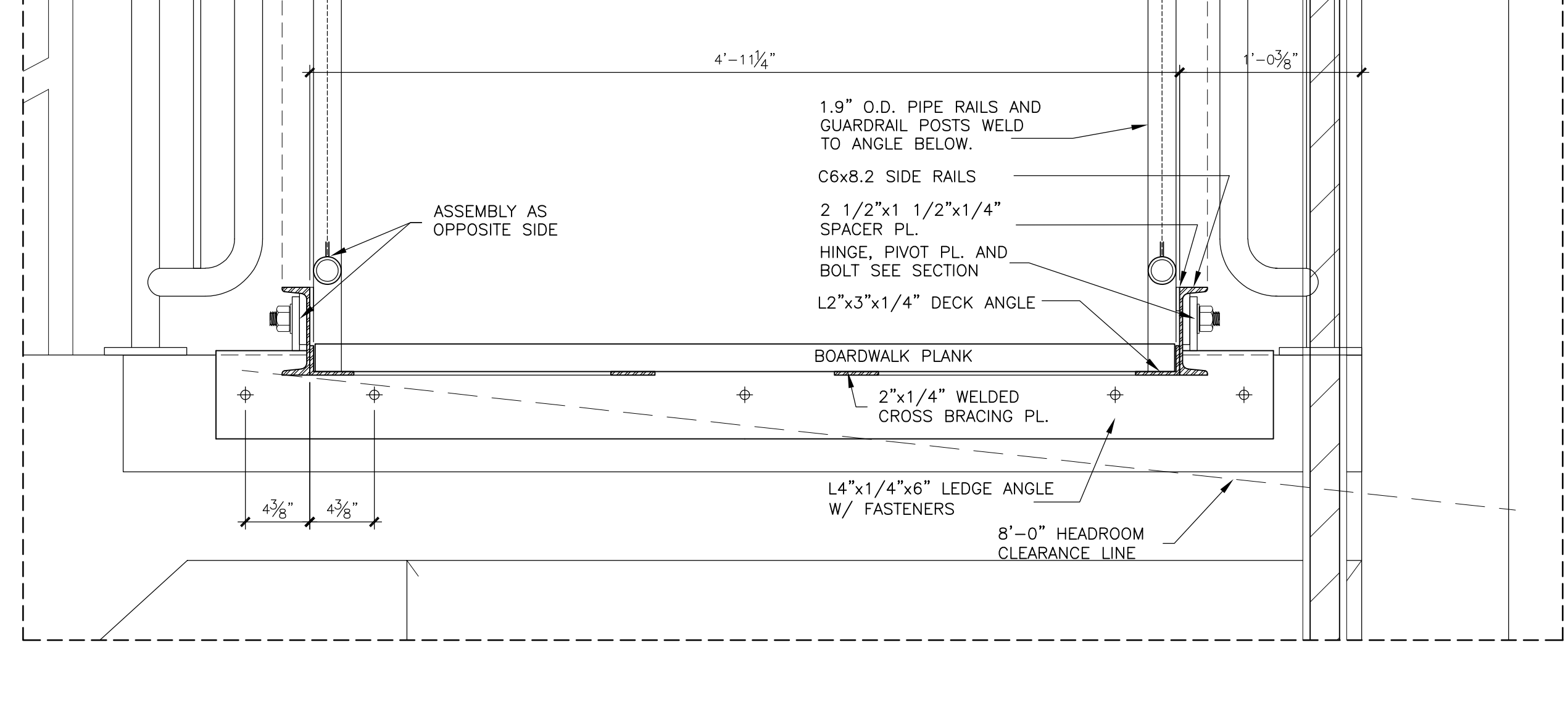
- A GENERAL NOTES**
- THIS STRUCTURE IS DESIGNED IN ACCORDANCE WITH, AND SHALL BE CONSTRUCTED IN COMPLIANCE WITH, THE NATIONAL BUILDING CODE OF CANADA 2020 AND THE ONTARIO BUILDING CODE 2024.
  - DESIGN LOADS ARE INDICATED ON THE DRAWINGS.
  - DESIGN LIVE LOADS SHALL NOT BE EXCEEDED AT ANY TIME DURING CONSTRUCTION.
  - DO NOT SCALE DRAWINGS.
  - VERIFY ALL DIMENSIONS, ELEVATIONS, SLOPES, DETAILS, CONDITIONS, ETC. SHOWN ON THE DRAWINGS AND VERIFIED WITH SITE CONDITIONS, PRIOR TO CONSTRUCTION OR PREFABRICATION OF ANY BUILDING COMPONENT.
  - MODIFICATIONS, ALTERATIONS OR SUBSTITUTIONS MUST BE AUTHORIZED IN WRITING BY THE ENGINEER.
  - DESIGN AND INSTALL ALL NECESSARY SHORING, BRACING AND FORMWORK. FORMWORK FOR CONSTRUCTION SHALL BE BRIDGED OVER EXISTING SERVICES. PROCEDURE MUST BE APPROVED BY THE ENGINEER.
  - CONSTRUCTION SAFETY REQUIREMENTS SHALL BE THE RESPONSIBILITY OF THE CONTRACTOR.
  - DEFECTIVE OR UNACCEPTABLE WORK SHALL BE REPAIRED TO THE SATISFACTION OF THE ENGINEER AT NO ADDITIONAL COST TO THE PROJECT.
  - WHERE THERE IS A DISCREPANCY BETWEEN DRAWINGS, SUBMIT A FORMAL RFI TO ENGINEER PRIOR TO MANUFACTURING OR INSTALLATION.
  - ALL SHOP DRAWINGS SHALL BE REVIEWED AND STAMPED BY THE GENERAL CONTRACTOR PRIOR TO SUBMITTAL TO ENGINEER.
  - ALL SHOP DRAWINGS REQUIRED TO BE SEALED BY A PROFESSIONAL ENGINEER REGISTERED IN THE PROVINCE OF ONTARIO.
- B STRUCTURAL STEEL**
- STRUCTURAL STEEL SHALL CONFORM TO CSA G40.20-13/ G40.21-13 (R2023), 300MPa.
  - ALL ROLLED OR WELDED STRUCTURAL SECTIONS AND PLATES TO BE TO CSA G40.21-13 (R2023), 300MPa.
  - FABRICATION AND ERECTION SHALL CONFORM TO CSA S16.24.
  - ALL WELDING SHALL BE PERFORMED BY QUALIFIED WELDERS FULLY APPROVED FOR STRUCTURAL WELDING BY THE CANADIAN WELDING BUREAU IN ACCORDANCE WITH CSA W47.1-25, CSA 47.2-11 (R2023), AND CSA W59.24.
  - STRUCTURAL STEEL ERECTOR SHALL SUPPLY AND INSTALL ALL TEMPORARY BRACING AND BRACING NECESSARY TO PROVIDE STABILITY FOR ALL ITEMS.
  - STRUCTURAL STEEL SUPPLIER SHALL SUBMIT SHOP DRAWINGS, SEALED BY A PROFESSIONAL ENGINEER REGISTERED IN THE PROVINCE OF MANITOBA SHOWING ALL DESIGN AND FABRICATION DETAILS OF CONNECTIONS, TO THE ENGINEER FOR REVIEW PRIOR TO FABRICATION.
  - PROVIDE MINIMUM 6.4mm (1/4") WELD UNLESS NOTED OTHERWISE.
  - DESIGN CONNECTIONS FOR MINIMUM 50% OF SHEAR CAPACITY UNLESS NOTED OTHERWISE.
- C HILTI ANCHORS**
- ANCHOR CAPACITY USED IN DESIGN SHALL BE BASED ON THE TECHNICAL DATA PUBLISHED BY HILTI OR SUCH OTHER METHOD AS APPROVED BY THE ENGINEER. SUBSTITUTION REQUESTS FOR ALTERNATE PRODUCTS MUST BE APPROVED IN WRITING BY THE ENGINEER PRIOR TO USE.
  - INSTALL ANCHORS IN ACCORDANCE WITH THE MANUFACTURER INSTRUCTIONS, AS INCLUDED IN THE ANCHOR PACKAGING.
  - THE CONTRACTOR SHALL ARRANGE AN ANCHOR MANUFACTURER'S REPRESENTATIVE TO PROVIDE ON-SITE INSTALLATION TRAINING FOR ALL OF THEIR ANCHORING PRODUCTS SPECIFIED.
  - INSTALL ANCHORS IN ACCORDANCE WITH SPACING AND EDGE CLEARANCES INDICATED ON THE DRAWINGS.
  - CUTTING OF REINFORCING BARS FOR INSTALLATION OF ANCHORS IS NOT PERMITTED UNLESS APPROVED BY THE ENGINEER. FOR NEW CONSTRUCTION CONTRACTOR SHALL COORDINATE PLACEMENT OF REINFORCING BARS AND ANCHORS. FOR EXISTING CONSTRUCTION THE CONTRACTOR SHALL UNDERTAKE TO LOCATE THE POSITION OF REINFORCING BARS BY HILTI FERROSCAN, GPR, X-RAY, CHIPPING, OR OTHER MEANS.



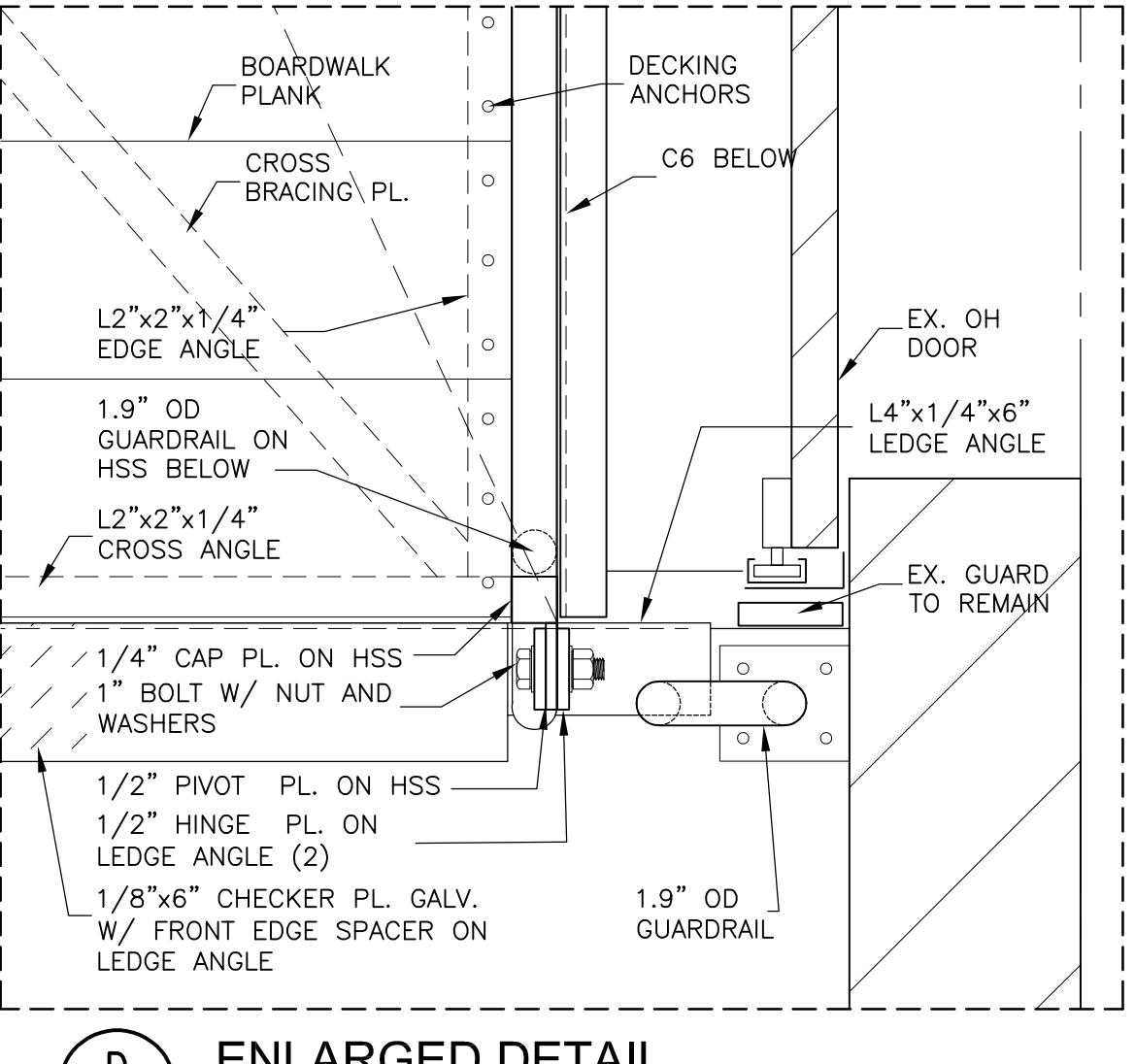
**1 WALKWAY LEVEL PLAN - CONSTRUCTION**  
 SCALE: 1/2"=1'-0"  
 DESIGN LOADS:  
 LIVE LOAD 100PSF  
 DEAD LOAD 20PSF + SUPE



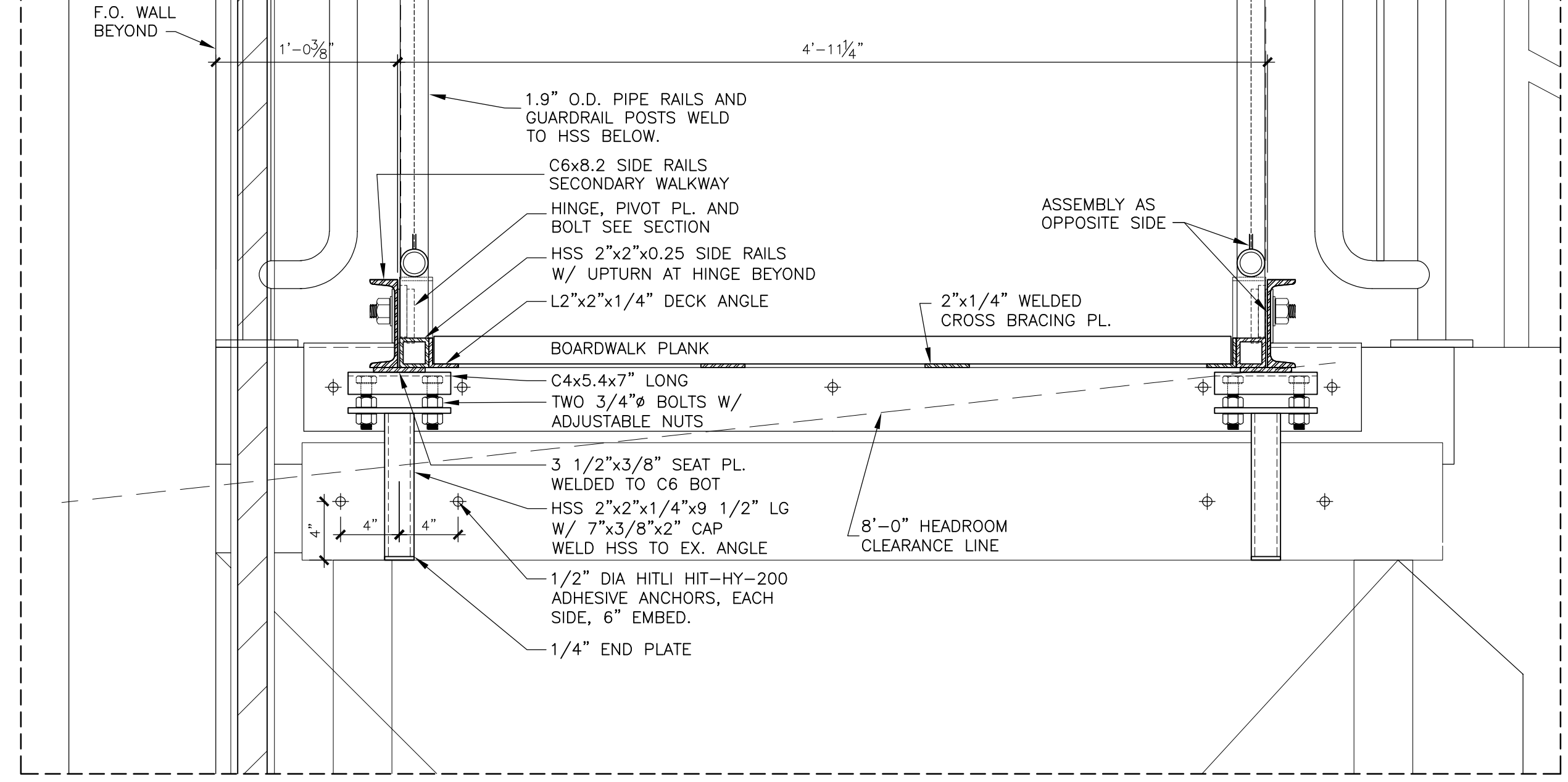
**C ENLARGED DETAIL**  
 SCALE: 1-1/2"=1'-0"



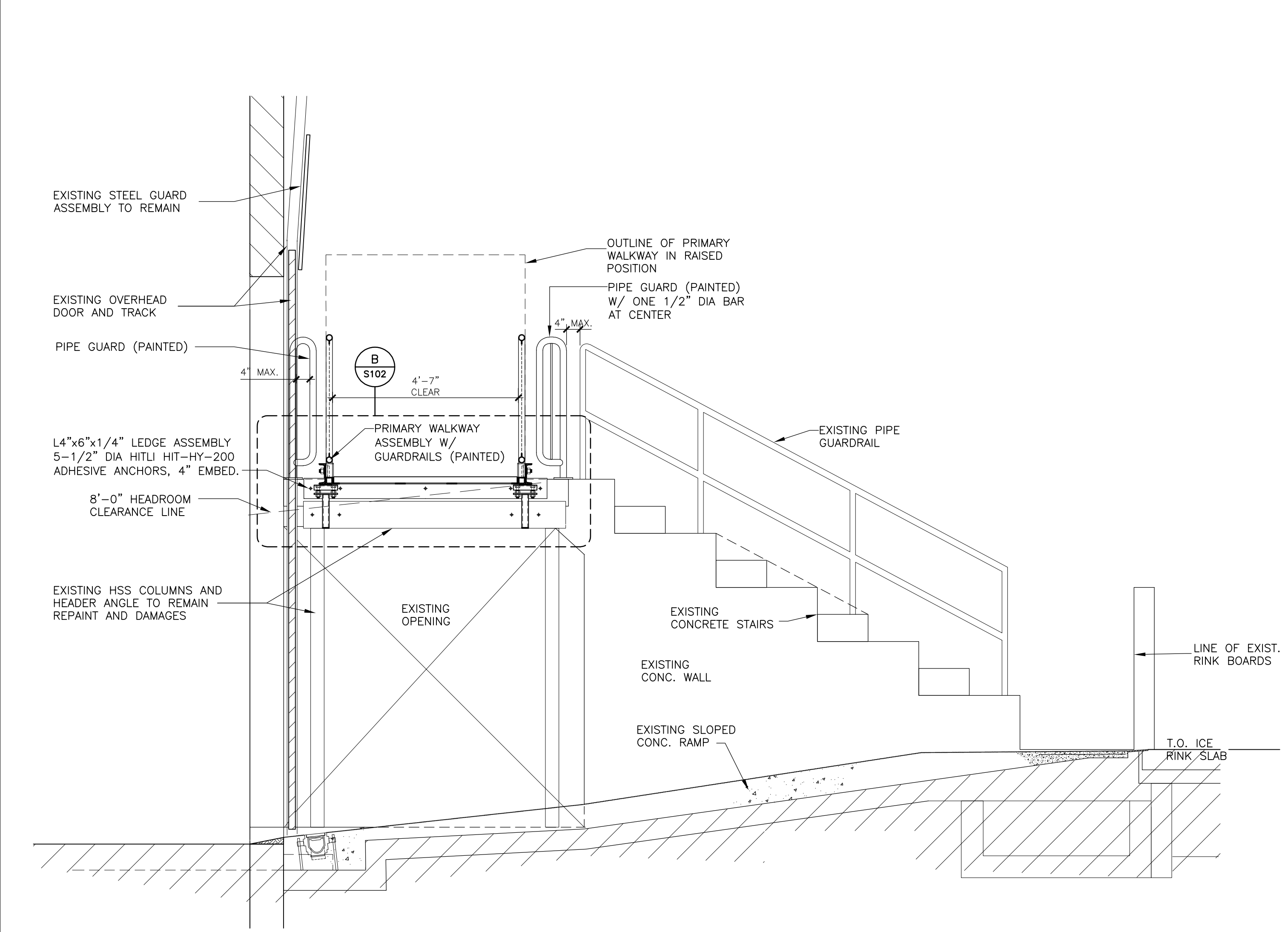
**A ENLARGED WALKWAY DETAIL**  
 SCALE: 1-1/2"=1'-0"



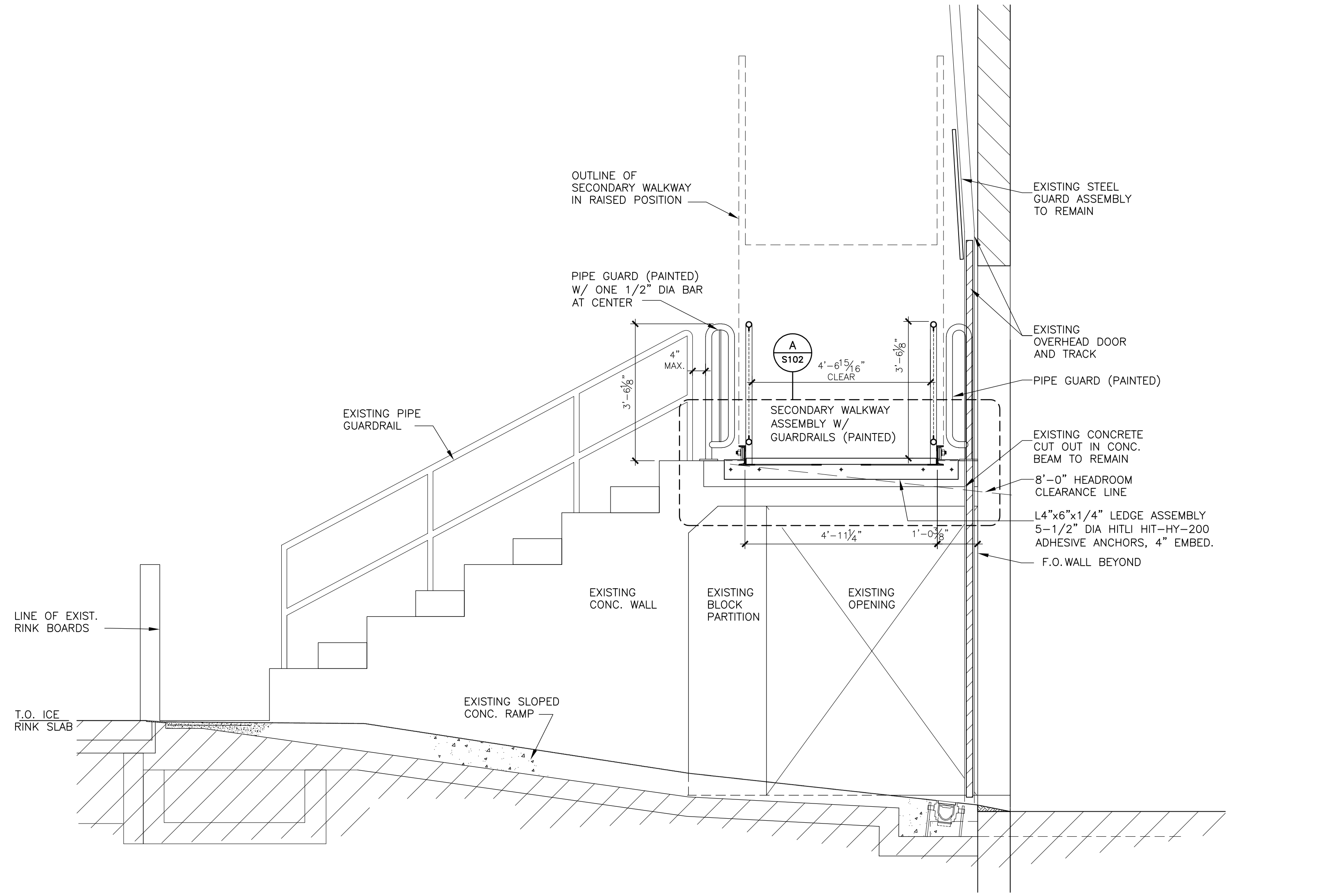
**D ENLARGED DETAIL**  
 SCALE: 1-1/2"=1'-0"



**B ENLARGED WALKWAY DETAIL**  
 SCALE: 1-1/2"=1'-0"



**2 WALKWAY SECTION - CONSTRUCTION**  
 SCALE: 1/2"=1'-0"



**3 WALKWAY SECTION - CONSTRUCTION**  
 SCALE: 1/2"=1'-0"

Revision	By	Appd.	YY.MM.DD	
E	ISSUED FOR CONSTRUCTION	BC	BF	26.05.21
D	ISSUED FOR CLIENT REVIEW	BC	BF	26.03.25
C	ISSUED FOR CLIENT REVIEW	BC	BF	26.03.24
B	ISSUED FOR CLIENT REVIEW	BC	BF	26.01.22
A	ISSUED FOR CLIENT REVIEW	BC	BF	26.01.09

File Name: 21022\_06.101  
 Dwn: C9d. Dgn: YY.MM.DD

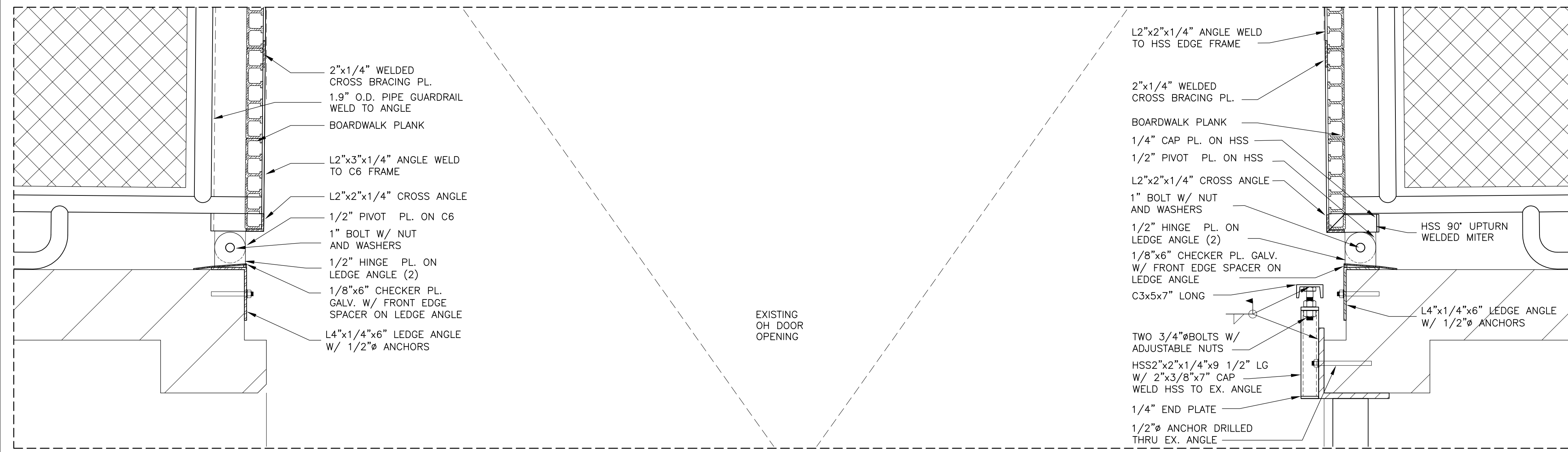
Permit/Seal



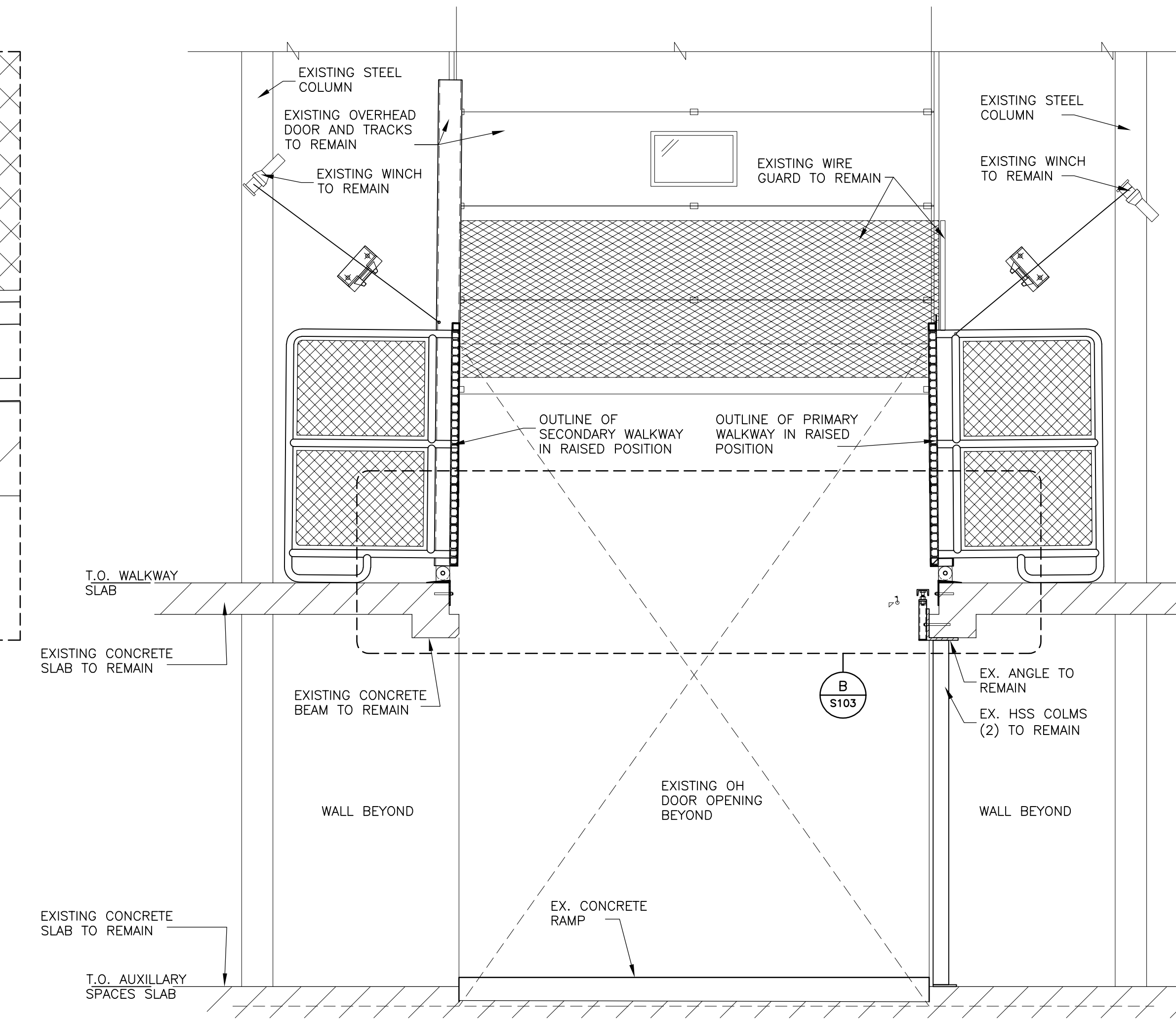
Client/Project  
**MONCRIEF CONSTRUCTION SPORTS CENTRE**  
 PROPOSED WALKWAY BRIDGE RENOVATIONS  
 18 MIKE RICHARDS WAY, KENORA ONTARIO

Title  
**WALKWAY BRIDGE PLANS AND SECTIONS - CONSTRUCTION**

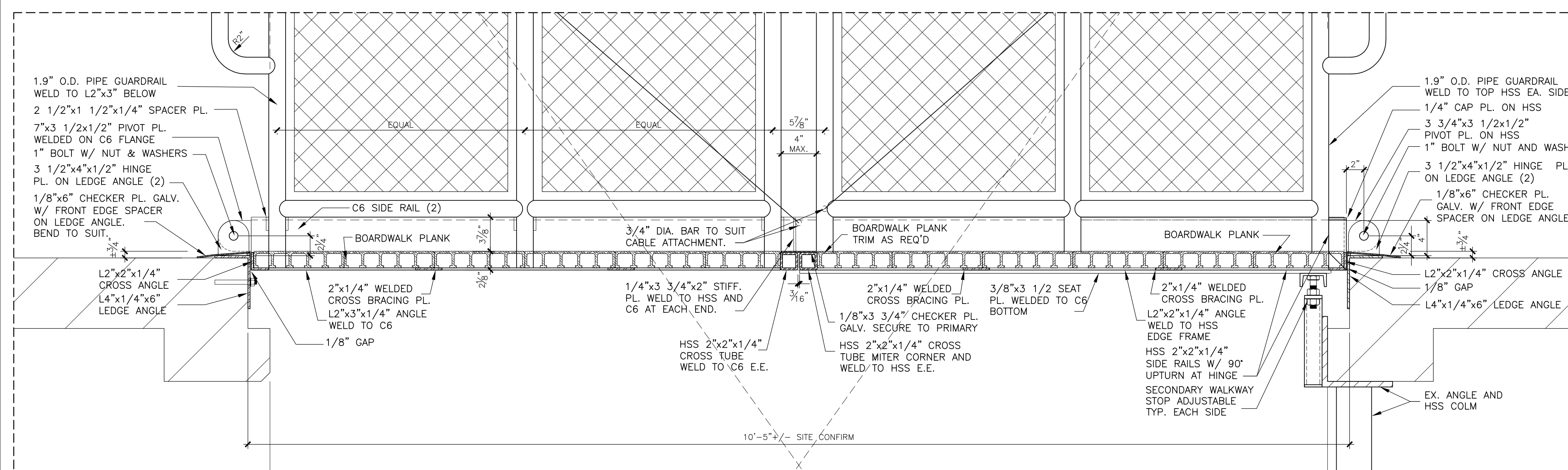
Project No.	Scale	
115425047	AS NOTED	
Drawing No.	Sheet	Revision



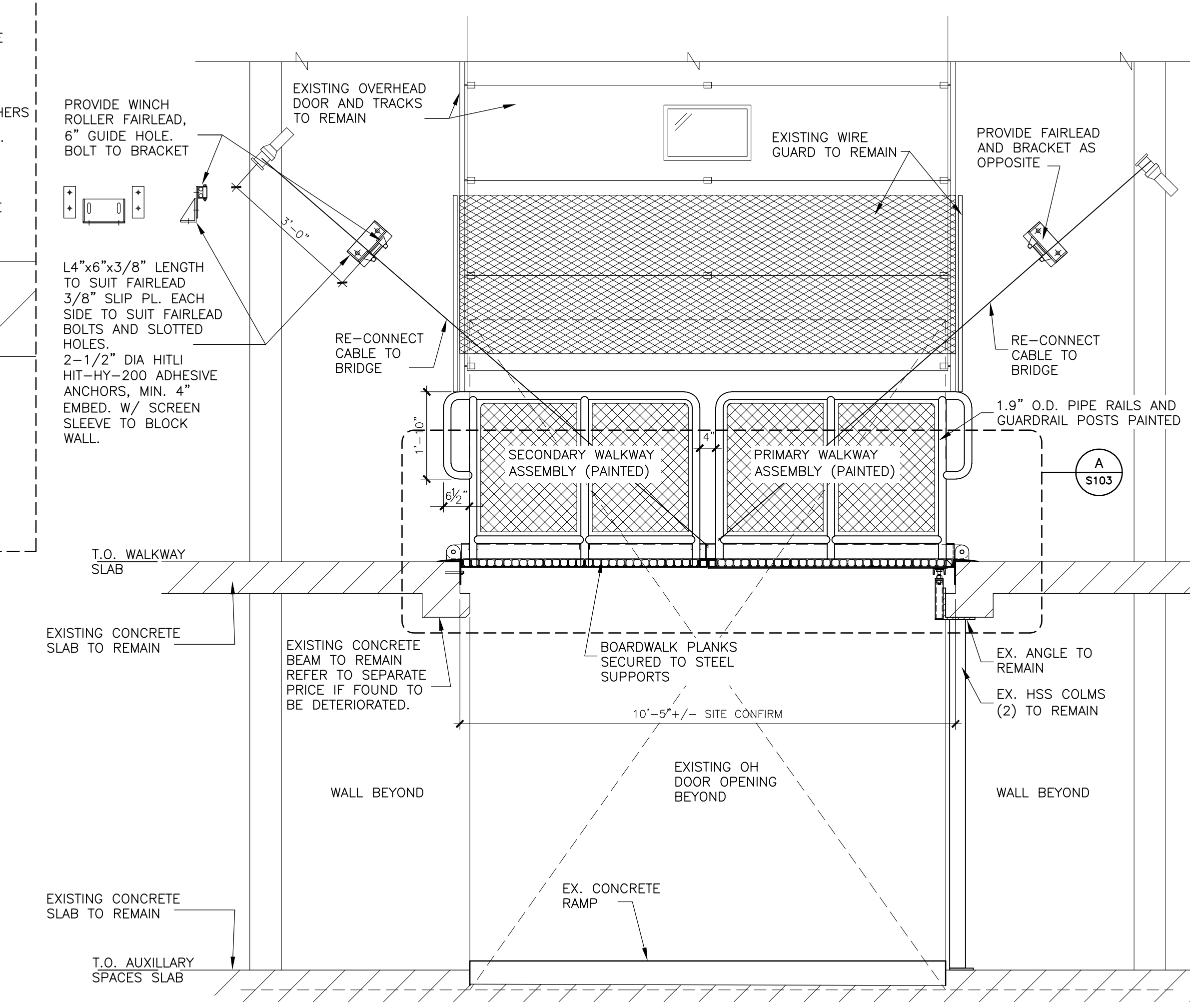
**B**  
 S-103 ENLARGED WALKWAY DETAIL  
 SCALE: 1-1/2=1'-0"



**2**  
 S-103 WALKWAY SECTION - CONSTRUCTION  
 SCALE: 1/2=1'-0"



**A**  
 S-103 ENLARGED WALKWAY DETAIL  
 SCALE: 1-1/2=1'-0"



**1**  
 S-103 WALKWAY SECTION - CONSTRUCTION  
 SCALE: 1/2=1'-0"

Revision	By	Appd.	YY.MM.DD	
D	ISSUED FOR CONSTRUCTION	BC	BF	26.05.21
C	ISSUED FOR CLIENT REVIEW	BC	BF	26.03.25
B	ISSUED FOR CLIENT REVIEW	BC	BF	26.01.22
A	ISSUED FOR CLIENT REVIEW	BC	BF	26.01.09

Issued	By	Appd.	YY.MM.DD

File Name:	BC	BF	BT	21.11.24
21022_06-101				



Client/Project  
**MONCRIEF CONSTRUCTION  
 SPORTS CENTRE**

PROPOSED WALKWAY BRIDGE  
 RENOVATIONS  
 18 MIKE RICHARDS WAY, KENORA ONTARIO

Title  
**WALKWAY SECTIONS  
 AND DETAILS**

Project No. 115425047 Scale AS NOTED  
 Drawing No. Sheet of Revision  
 S-103 of

